



ATMI
*Association for Technology
in Music Instruction*

2013
**NATIONAL
CONFERENCES**

PROGRAM

**CAMBRIDGE
MASSACHUSETTS**
OCTOBER 31 – NOVEMBER 2, 2013



CONTENTS

Acknowledgments	6
Welcome from the CMS Program Committee Chair	7
CMS Officers and Committees	8–9
Welcome from the ATMI Program Committee Chair	11
General Information	12
Conference Highlights	13
Lunchtime Concert Series	14
Special Presentation Formats	15
Exhibitors	17
2013 Plenary Speakers	18–21
Schedule: Thursday, October 31	24–28
Schedule: Friday, November 1	30–38
Schedule: Saturday, November 2	40–46
Conference Pre-Registrants	48–53
Conference Hotel Maps	56–57
Notes	60



FREE
online access
for 7 days*

Do you have access
to our **Music** titles?

Explore Routledge **Music** journals with
7 days' free online access.*

Simply sign in or register at:

www.tandfonline.com/r/music7days

*Online access for 7 days from activation, to all content published in 2010 to 2012 volumes of selected journals. Voucher can only be activated once and is valid until 31/12/2013

 **Routledge**
Taylor & Francis Group



2014 Joint Conference of the
College Music Society
Southern Chapter
and
Mid-Atlantic Chapter
and the
Association for Technology
in Music Instruction

Feb. 13–15, 2014

The University of Tennessee, Knoxville
Natalie L. Haslam Music Center

- Keynote address by the great **Doc Severinsen**.
- Premiere performances of **The Doc Severinsen International Composition Contest** winners, performed by solo trumpeters Vince DiMartino, Allen Vizzutti, and Gabe DiMartino with the UT Wind Ensemble and/or UT Symphony Orchestra.
- **CMS Composers' Concert** featuring new works performed by UT concert ensembles, Opera Faculty, Big Band, and Jazz Combos.



- Annual Luncheon featuring the music of **jazz legend Donald Brown**, performing with the UT Jazz Faculty.
- Presentations by nationally renowned scholars and performers.

More information at
www.music.utk.edu/conference/



Registration information at
www.music.org
(under CMS events: Regional Conferences)

ACKNOWLEDGMENTS

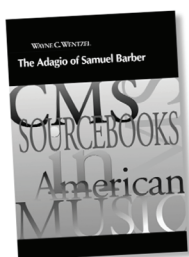
The College Music Society wishes to thank **Sally Coveleskie** of **Steinway & Sons** and **Brendan Murphy** and **Jonathan Tetzlaff** of **M. Steinert & Sons** for their generous provision of pianos for its Fifty-Sixth National Conference. Steinway is the official piano of The College Music Society.

The College Music Society thanks **Arthur Gottschalk** of **Rice University** for coordinating the Performances of New Music series. A special thank you is extended to **Juventas New Music Ensemble**, **The Scott/Garrison Duo with Rajung Yang**, **Strung Out Trio**, **Trio Florida**, and **Zephyrus** for their preparation and performance of works by CMS Composers.

The College Music Society offers sincere gratitude to **Joseph Berkovitz** and **Elizabeth Gazda** of **Notefight** for their contribution towards this year's closing reception.

CMS greatly appreciates the assistance of its student interns: **Meredith Anderson**, **Katie Fernstrom**, **Alexander French**, **Carys Kunze**, **Rebecca Little**, **Savannah Marshall**, **Deanna Nebel**, and **Andrew Stamp**.

Finally, The College Music Society and the Association for Technology in Music Instruction graciously acknowledge all those who helped to make their national conferences possible but who are not mentioned above.



ISBN: 978-1-881913-62-7

Announcing CMS Sourcebooks in American Music Series - Volume 8:

The Adagio of Samuel Barber

by WAYNE C. WENTZEL

- The most exhaustive study of Barber's beloved masterpiece in print
- A consideration of the origins and reception history of the three versions by Barber and an accounting of treatments for other media
- Surveys of the acceptance of Adagio in international culture: from film to cartoon, from poetry to crossword puzzles, from modern dance to YouTube
- An overview of its use as an expression of grief and patriotism
- A reflection on its meaning: American? Sad? Gay?
- With a companion compact disc of the composer's versions as well as representative transcriptions and arrangements

Convention Special: \$60.00 (Until Nov. 15) Paperbound 7"x 9" (includes 680 pp. + CD)

For information concerning the series or to place an order, visit "Books and Monographs" on the CMS website at www.music.org

 **THE COLLEGE
MUSIC SOCIETY**

312 East Pine Street, Missoula MT 59802 USA



Welcome to Cambridge and the 2013 National Conference of The College Music Society! My colleagues and I on the program committee are delighted that you have joined us in this beautiful and historic city for what promises to be a lively and stimulating conference. The program truly reflects the breadth of our profession, with topics related to curriculum, assessment, repertoire, pedagogy, mentoring, and much more; mirroring the location, several presentations also highlight music in Boston and the greater New England region. The 2013 national topic, “Inclusivity and Invention,” is front and center as we attempt to define and advocate for the crucial role of music in higher education, especially during these challenging economic times.

Meeting once again with the Association for Technology in Music Instruction, ATMI and CMS welcome two highly distinguished speakers to the conference. Through his work as director of the MIT Lifelong Kindergarten Group, Mitchel Resnick is a true pioneer in creating new learning experiences for children and adults alike. Joan Tower, our CMS Robert M. Trotter lecturer, is one of America’s most recognized composers, whose advocacy on behalf of contemporary music is truly inspiring. Both of these talks will surely rank as “can’t miss” events.

A renewed emphasis on active engagement and participatory music are hallmarks of this year’s conference, ranging from panels on a variety of topics through a New England-style contradance to the first-ever CMS *Honk!* event. So put on comfortable shoes and prepare to get moving!

From lighting talks to the post-Trotter fishbowl, composers’ concerts (three this year) to a new lunchtime concert series featuring authentic world music performances, lecture-recitals to student research presentations, and networking with colleagues across the profession, there is truly something for everyone and we hope that you will take full advantage of it. Finally, I would like to thank personally the members of the program committee for their thoughtful and diligent work—completed with great camaraderie under tight time constraints—in assembling this year’s program. And to every presenter, panelist, composer, and speaker who has contributed to this event, not to mention the indefatigable CMS staff (especially Peter Park), thank you for your contributions as well. Have a great conference!

Keith E. Clifton
Program Committee Chair
2013 CMS National Conference

2013 CMS PROGRAM COMMITTEE

Keith E. Clifton (Central Michigan University), Chair
Robin E. Armstrong (McDaniel College)
Diane W. Follet (Muhlenberg College)
Gena R. Greher (University of Massachusetts–Lowell)
Deborah G. Nemko (Bridgewater State University)
Douglas T. Owens (Old Dominion University)
James E. Perone (University of Mount Union)
Robert W. Stephens (University of Connecticut)

2013 CMS COMPOSITION REVIEW COMMITTEE

Art Gottschalk (Rice University), Chair
Edmund Cionek (Purchase College)
Amy Dunker (Clarke College)
Leslie A. Hogan (University of California–Santa Barbara)
Malcolm Rector (University of St. Thomas)



BOARD OF DIRECTORS

President: Patricia Shehan Campbell (University of Washington)
Immediate Past President: David B. Williams
(Illinois State University, Emeritus)
Vice-President: William A. Everett (University of Missouri–Kansas City)
Secretary: Terry Lynn Hudson (Baylor University)
Treasurer: Laurence Kaptain (Louisiana State University)
At Large: David E. Myers (University of Minnesota–Twin Cities)
Composition: Arthur Gottschalk (Rice University)
Ethnomusicology: Carol M. Babiracki (Syracuse University)
Music Education: Cathy L. Benedict (Florida International University)
Music in General Studies: Gail Hilson Woldu (Trinity College)
Music Theory: Claire L. Boge (Miami University)
Musicology: John Koegel (California State University–Fullerton)
Performance: Deborah G. Nemko (Bridgewater State University)

PAST PRESIDENTS

John Buccheri (Northwestern University)
Nohema Fernández (University of California–Irvine)
C. Tayloe Harding, Jr. (University of South Carolina–Columbia)
Kathleen Lamkin (University of La Verne)
Harry B. Lincoln (State University of New York–Binghamton)
Barbara Reeder Lundquist (University of Washington)
Barbara English Maris (The Catholic University of America)
Dale A. Olsen (The Florida State University)
Phillip Rhodes (Carleton College)
Elliott S. Schwartz (Bowdoin College)
Douglass Seaton (The Florida State University)
Cynthia Crump Taggart (Michigan State University)
Arthur R. Tollefson (University of North Carolina–Greensboro)
Robert Weirich (University of Missouri–Kansas City)
Robert J. Werner (University of Cincinnati)
David Willoughby (Elizabethtown, Pennsylvania)

ADVISORY COUNCILS

Student Advisory Council: Jennifer Sterling Snodgrass (Appalachian State University) & Gene S. Trantham (Bowling Green State University)
Cultural Inclusion: Jorge Torres (Lafayette College)

BOOKS & MONOGRAPHS

General Editor: Todd E. Sullivan (Northern Arizona University)
Cultural Inclusion: Sang-Hie Lee (University of South Florida)
Monographs and Bibliographies in American Music: Michael J. Budds
(University of Missouri–Columbia)
Sourcebooks in American Music: Michael J. Budds
(University of Missouri–Columbia)

CAREER DEVELOPMENT

Academic Careers: Francesca M. Arnone (Baylor University)
Academic Citizenship: John P. Gaulty (Cabrillo College)
Academic Leadership & Administration: James C. Scott
(University of North Texas)
Music Entrepreneurship Education: Gary D. Beckman
(North Carolina State University)
Careers Outside the Academy: Michael Drapkin
(Drapkin Institute For Music Entrepreneurship)



ENGAGEMENT

Business and Industry: Rick Schumk (University of Southern California)
Community Engagement: Suzanne L. Burton (University of Delaware)
Higher Education: Pamela D. Pike (Louisiana State University)
International Initiatives: William A. Everett (University of Missouri–Kansas City) and Alexandra Zacharella (University of Arkansas–Fort Smith)

TECHNOLOGY & INFORMATION SERVICES

Instructional Technology: Alex Ruthmann (New York University)
New & Emerging Technologies: Sara L. Hagen (Valley City State University)
Audio-Visual: Steven Kreinberg (Temple University)

PROFESSIONAL ACTIVITIES

2013 National Conference: Keith E. Clifton (Central Michigan University)
2013 International Conference: Juan Chattah (University of Miami)
Professional Development: Betty Anne Younker
(University of Western Ontario)
Presidents of the Regional Chapters:
Great Lakes: Susan M. Piagentini (Northwestern University)
Great Plains: Andrew Houchins (Emporia State University)
Mid-Atlantic: Jennifer Sterling Snodgrass (Appalachian State University)
Northeast: Holly K. Roadfeldt-O’Riordan (Lafayette College)
Pacific Northwest: Samuel J. Hamm (Rocky Mountain College)
Pacific Southwest: Vacant
Rocky Mountain: Joice Waterhouse Gibson
(Metropolitan State University of Denver)
South Central: Shannon L. Small (Brazosport College)
Southern: Ann L. Silverberg (Austin Peay State University)

COLLEGE MUSIC SYMPOSIUM

General Editor: David G. Woods (University of Connecticut)
Audio Performance Archive: Nanette Kaplan Solomon
CMS Forums: Matthew Shevitz (Harold Washington College)
CMS Reports: Susan M. Filler (Chicago, Illinois)
Instructional Technologies & Methodologies: Peter R. Webster
(University of Southern California)
Music Business-Industry: Chris Rutkowski
(Indiana University Purdue University–Fort Wayne)
Reviews: David Thurmaier (University of Missouri–Kansas City)
Scholarship & Research: C. Victor Fung (University of South Florida)
Video Lectures, Performances, & Lecture-Recitals: Matthew Shaftel
(Florida State University)

THE CMS FUND BOARD OF DIRECTORS

President: C. Tayloe Harding, Jr. (University of South Carolina)
Secretary: David G. Woods (University of Connecticut)
Treasurer: Diane Follet (Muhlenberg College)
Director: Ellen R. Gregorie (Wilkes University)
Director: James C. Scott (University of North Texas)
Executive Director: Mary Anne Rees (Advancing Leadership for Non-Profits)

CMS EXECUTIVE OFFICE STAFF

Executive Director: Robby D. Gunstream
Books & Monographs: Tom Cook
Communications: Mary Anno-Murk
Communications: Suzanne Nuanez
Engagement: Dean J. Peterson
Information Delivery: Elizabeth Mast
Information Services: Julie L. Johnson
IT Director: David Schafer
Member Services: Shannon Devlin
Professional Activities: Peter S. Park

NEW *from* NORTON



A History of Western Music

Ninth Edition

J. Peter Burkholder, Donald Jay Grout, and Claude V. Palisca

The definitive history of Western music, now with Total Access

The new Ninth Edition of *A History of Western Music* remains the text that students and professors have trusted for generations to learn what's important, where it fits, why it matters, and who cares. Because listening is central to music history, the new Total Access program provides a full suite of media resources—including streaming recordings—with every new text.



Concise History of Western Music

Fifth Edition

Barbara Russano Hanning

The most student-friendly music history text on the market, now with Total Access

Combining concision with the imaginative pedagogy that her text pioneered, Hanning provides students with the cultural and historical context to illuminate the music and understand its significance.



Norton Anthology of Western Music

Seventh Edition

J. Peter Burkholder and Claude V. Palisca

An anthology of 220 outstanding teaching pieces

With vivid, compelling works—15% new to this edition—in dynamic performances, the *Norton Anthology of Western Music* remains the best anthology available. With recordings available in multiple formats—including online streaming and MP3 discs—listening is easier than ever.

Stop by the Norton tables to examine our books or to get a demonstration of Total Access, Study Space, or Noteflight worksheets.



INDEPENDENT AND EMPLOYEE-OWNED | WWW.NORTON.COM

ATMI

*Association for Technology
in Music Instruction*



On behalf of the 2013 ATMI Program Committee and the ATMI Executive Board, it is my pleasure to welcome you to this year's national conference in Cambridge, Massachusetts! This year we have an exciting roster of scholarly presentations, software and hardware demonstrations, panels, performances, and discussion groups offering attendees a wide spectrum of topics in music technology. In addition, the membership of ATMI at the Conference is always eager to share their love of music technology with you.

Of special interest is the Friday morning CMS/ATMI Music Technology Lecture entitled, "Lifelong Kindergarten: Imagine, Create, Play Share" presented by Mitchel Resnick, the LEGO Papert Professor of Learning Research and head of the Lifelong Kindergarten group at the MIT Media Lab. We thank this year's roster of exhibitors and presenters, as well as the ATMI Executive Board, ATMI President Alex Ruthmann, and the 2013 ATMI Program Committee, who have given generously of their time to make this year's Conference a success.

Finally, I wish to express my sincere thanks to the College Music Society Board of Directors and especially to Peter Park and the CMS staff who have provided extraordinary support in making this year's Conference a success.

Gena R. Greher
Program Committee Chair
2013 ATMI National Conference

ATMI EXECUTIVE COMMITTEE

President: Alex Ruthmann (New York University)
Vice-President: Gena R. Greher (University of Massachusetts–Lowell)
Secretary: Jane Kuehne (Auburn University–Auburn)
Treasurer: Rick Dammers (Rowan University)

ATMI APPOINTED POSITIONS

Email List Manager: Richard Dammers, (Rowan University)
Technology Directory Editor: Barbara Murphy
(University of Tennessee–Knoxville)
Web Manager: Barbara Murphy (University of Tennessee–Knoxville)

2012 ATMI PROGRAM COMMITTEE

Gena R. Greher (University of Massachusetts–Lowell), Chair
Jay Dorfman (Boston University)
Sara Hagen (Valley City State University)
VJ Manzo (Worcester Polytechnic Institute)
Brendan McConville (University of Tennessee–Knoxville)
Susan Piagentini (Northwestern University)
Brian Shepard (Texas Christian University)

GENERAL INFORMATION

ANNOUNCEMENT BOARD

Please check the bulletin board adjacent to the registration desk for schedule changes, room changes, or other announcements related to the conference. Pending available space, this board may also be used by conference attendees to post announcements (no commercial materials are allowed). Please check with the registration staff before making any postings.

CONFERENCE REGISTRATION

The registration desk is located in the foyer of the Hyatt Regency Cambridge Hotel and will be open during the following times:

Wednesday, October 30

5:00 p.m. – 8:00 p.m.

Thursday, October 31

7:30 a.m. – 5:00 p.m.

Friday, November 1

7:30 a.m. – 5:00 p.m.

Saturday, November 2

7:30 a.m. – 3:00 p.m.

EXHIBITS

Exhibits will be located in the President's pre-function area and hallways of the first floor of the Hyatt Regency Cambridge Hotel, and will be open during the following times:

Thursday, October 31

1:00 p.m. – 3:00 p.m.

Friday, November 1

8:00 a.m. – 5:00 p.m.

Saturday, November 2

8:00 a.m. – 3:00 p.m.

PRACTICE ROOMS

Two conference rooms of the Hyatt Regency Cambridge Hotel—Charles Sumner and Paul Revere B—will serve as practice rooms throughout the conference. Each will contain an upright piano, bench, 4 chairs, and 2 music stands. Performers who require additional stands should plan to provide their own. Practice rooms will be available during the following times:

Wednesday, October 30

5:30 p.m. – 10:00 p.m.

Thursday, October 31

7:00 a.m. – 10:00 p.m.

Friday, November 1

7:00 a.m. – 10:00 p.m.

Saturday, November 2

7:00 a.m. – 5:00 p.m.

Practice room reservations will be taken at the registration desk (not in advance of the conference) on a first-come, first-served basis. Each conference presenter may sign up for 30 minutes per day of practice time. Unfortunately the schedule is too tight to promise anyone practice time in the presentation room itself. We ask that you display the utmost in professional courtesy regarding piano usage.

CONFERENCE HIGHLIGHTS

THURSDAY, OCTOBER 31

- Lunchtime Performance Series: Libana**
12:05–12:50 p.m. Charles View Ballroom
** See page 14 for further information*
- Performances of New Music I**
1:00–2:25 p.m. Ballroom D
- Robert M. Trotter Lecture**
3:00–3:55 p.m. Ballroom D
Joan Tower
** See page 19 for further information*
- CMS Fishbowl Session**
4:00–4:55 p.m. Ballroom D
** See page 15 for further information*
- Welcome Reception**
5:00–5:45 p.m. Charles View Ballroom
** Open to all conference attendees*
- HONK!: Feel the Power of Performance**
5:45–6:45 p.m. Charles View Ballroom
** Participatory musicking with Reebee Garofola & friends*
- New England Contradance**
8:00–9:30 p.m. Charles View Ballroom
** Participatory musicking with George Marshall & Wild Asparagus*

FRIDAY, NOVEMBER 1

- CMS/ATMI Music Technology Lecture**
8:00–8:55 a.m. Ballroom D
Mitchel Resnick
** See page 21 for further information*
- Lunchtime Performance Series: Vong Pleng Khmer**
12:15–12:45 p.m. Ballroom D
** See page 14 for further information*
- ATMI Annual Business Meeting**
4:30–5:30 p.m. Crispus Attucks
** All ATMI members are encouraged to attend*
- Performances of New Music II**
7:30–9:00 p.m. Ballroom D

SATURDAY, NOVEMBER 2

- Annual Meeting of the CMS Membership**
8:00–8:55 a.m. Ballroom D
** All CMS members are encouraged to attend*
- Lunchtime Performance Series: Boston Guzheng Ensemble**
12:15–12:45 p.m. Ballroom D
** See page 14 for further information*
- CMS Lightning Talks**
1:00–2:05 p.m. Ballroom D
** See page 15 for further information*
- Performances of New Music III**
4:00–4:55 p.m. Ballroom D
- Closing Reception**
5:00–6:30 p.m. Riverside Pavilion
** Open to all conference attendees*

LUNCHTIME CONCERT SERIES

In response to the membership's request for more live music during the conference, the Program Committee has organized the Lunchtime Concert Series—an exciting new feature this year! These performances are free and open to all conference attendees. "Grab-and-go" lunch items will be available for purchase so that attendees may enjoy a concert and a meal together.

Thursday, October 31

Libana

12:05–12:50 p.m.

Charles View Ballroom

Internationally renowned world music & dance ensemble Libana illuminates the creativity, vision and spirit of women worldwide. Riveting, transformational and soul stirring, Libana takes audiences on a musical journey reflecting the universal human experience uniting us all. From ancient traditions to contemporary creations, from the political to the spiritual, Libana's global repertoire covers a vast musical spectrum expressed with stunning close a cappella vocals and an impressive palette of instruments including oud, charango, saz, guitar, hammered dulcimer, panpipes, accordion, dumbek, djembe, frame drum, dholak, tapan, clarinet and double bass. Interweaving music, dance and story from such divergent cultures as the Balkans, Africa, the Middle East, Asia, South America and Europe, Libana's artistry inspires audiences with wonder at the beauty, breadth and wisdom of our world's cultural diversity and common humanity.

Friday, November 1

KhmerVong Pleng Khmer

12:15–12:45 p.m.

Ballroom D

Vong Pleng Khmer is the traditional Cambodian music ensemble of the University of Massachusetts Lowell. Founded in 2012 by Dr. Alan Williams, the ensemble is led by master musician Sovann Kohn, and guest instructor Vith Chrom. In its brief history, the ensemble has performed for the Khmer New Year's celebration held at the future site of the Cambodian Cultural Arts center, for a recital hour hosted by the Department of Music at UMass Lowell, and for the Asian Students Association of UMass Lowell. Vong Pleng Khmer plays mahori style, a form of traditional music often connected with wedding festivities. The ensemble is comprised of undergraduate and graduate music majors of UMass Lowell, all coming to this music as complete novices, learning from Mr. Kohn and Mr. Chrom in the same manner as the music has been passed down through the years, without written notation, instead learned through a process of repetition and memorization.

Saturday, November 2

The Boston Guzheng Ensemble

12:15–12:45 p.m.

Ballroom D

The Boston Guzheng Ensemble was founded by Shin-Yi Yang in 2002. It is the only guzheng ensemble in the New England area and the mission of the ensemble is to promote Chinese culture and music to the public and to bring to the audience a new sound and aural experience that are slightly different from the more typical individual performances. Besides hosting annual concerts and giving educational performances at town libraries, the Ensemble has been featured on a number of prominent concert series including "Never Too Late" Program presented by the Boston Public Library, "Chinese Fan-tasia", a dance and music performance series presented by Springstep, and "Rising Step by Step", Musica-Eclectica Concert Series presented by Eastern Nazarene College. Their concert experiences have also included the John Hancock Hall, MIT Kresge Auditorium, New England Conservatory Brown Hall, the Fine Arts Center of Regis College, and the Indian Hill Music Center. In 2007, the Ensemble released their first CD album entitled "New England East Wind". The ensemble was also created to raise the level of the members' skills and to cultivate the concept of teamwork.

SPECIAL PRESENTATION FORMATS

Fishbowl Discussion
Thursday, October 31
4:00–4:55 p.m.
Ballroom D

For the past two years, CMS has positioned itself on the forefront of conference innovation by including a moderated “fishbowl discussion” in its program. CMS will once again utilize this format to immediately follow the 2013 Robert M. Trotter lecture.

The purpose of a fishbowl is to allow a large group of people to participate in a conversation, as opposed to a select few. During this session, 7 chairs are set up in the center of the room and filled by 6 people who begin the discussion while those sitting around the perimeter of the room observe, listen and wait for a moment to enter the conversation. When someone from the audience wishes to talk, they come to the empty chair, sit, and join in the discussion. When the current speaker has finished, s/he steps back into the audience. This pattern of constant rotation continues, thus leaving one chair empty at all times. The goal is to have a fast-paced and frequently evolving conversation. It is successful when many different individuals participate. With this in mind, participants are reminded to keep their comments brief and to exit the circle once finished with their comments. Participants are welcome to re-enter the circle throughout the course of the discussion.

While this year’s Trotter lecturer has been invited to help initiate the discussion, this is not a one-on-one question period with her (she will also step out at the start) but rather a group dialogue on a variety of topics that emerge.

Lightning Talks
Saturday, November 2
1:00–2:05 p.m.
Ballroom D

Lightning talks are 5-minute presentations that focus on a single topic, example, idea, project, or technique. Lightning Talks do not attempt to cover all aspects of their subject matter, but present one facet of the idea clearly and succinctly. CMS first introduced lightning talks into its national conference schedule in 2010, and these have proven to be very popular. CMS will once again provide the opportunity for CMS members to share ideas via this exciting format during a special session in Cambridge. This year’s lightning talks will center around the 2013 National Topic, “Inclusivity and Invention.”

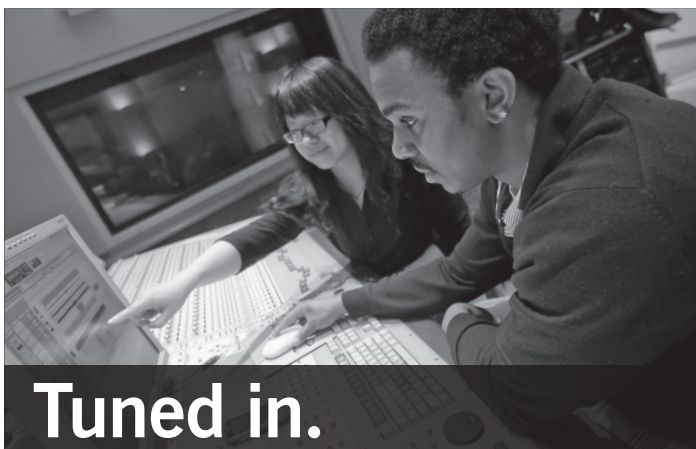
Research Presentations by Students & Recent Graduates
Saturday, November 2
2:30–3:55 p.m.
Haym Saloman

Students and recent graduates will have the opportunity to meet and present their research to senior researchers in the field. The goal of this session is to give space for all student members to come together and learn from and with a select group of researchers as well as extend the networking web facilitated by CMS. All are invited to experience this unique student-centered session.

DID YOU KNOW?

You can access any proposal that you have developed for a CMS conference within the online proposal system at any time.

Just login at www.music.org and click on “My Conference Proposals” on the upper, left portion of the home page.



Tuned in.

Music Composition and Production Degrees

- Doctor of Arts in Music (Theory and Composition emphasis)
- Master of Music in Composition
- Bachelor of Science in Music Media Production
- Bachelor of Music in Composition:
Instrumental/Vocal or Sonic Arts Technology

Graduate assistantship opportunities available

Work in our state-of-the-art Music Media Production studios:
computer music, composition, recording technology

www.bsu.edu/music

BALL STATE UNIVERSITY



SCHOOL OF MUSIC

Master of Music in American and Public Musicology

Westminster Choir College of Rider University is pleased to announce a new Master of Music in American and Public Musicology. The first graduate program in North America to require coursework in public musicology, students will work with education directors at performing arts centers and museums, digital music archivists, music journalists, oral historians, and musicologists involved in K-12 education.

WESTMINSTER
CHOIR COLLEGE



RIDER
UNIVERSITY

101 Walnut Lane - Princeton, NJ

Learn more at www.rider.edu/whywestminster.

2013 EXHIBITORS

A-R Editions
8551 Research Way
Suite 180
Middleton, WI 53562
www.areditions.com

Bedford/St. Martin's
75 Arlington Street
Boston, MA 02116
www.bfwpub.com

Connect for Education
12359 Sunrise Valley Drive
Suite 320
Reston, VA 20191
www.connect4education.com

G Major Music Theory LLC
5860 Marlborough Road
Pittsburgh, PA 15217
www.gmajormusictheory.org

Interactive Listening
9817 S. Wood Street
Chicago, IL 60643
www.interactivelistening.com

Journal of Music Theory Pedagogy
University of Oklahoma
Norman, OK 73069
jmt.p.uou.edu

Libana
PO Box 400530
Cambridge, MA 02140
www.libana.com

Make Music, Inc.
7615 Golden Triangle Drive
Suite M
Eden Prairie, MN 55344
www.makemusic.com

Music First
180 Madison Avenue
New York, NY 10016
www.musicfirst.com

Music Library Association
c/o AR Editions
8551 Research Way
Suite 180
Middleton, WI 53562

Music Teachers National Association
441 Vine Street
Suite 3100
Cincinnati, OH 45202
www.mtna.org

Noteflight
374 Congress Street
Suite 204
Boston MA 02210
www.noteflight.com

Oxford University Press
198 Madison Avenue
New York, NY 10016
www.oup.com

PARMA Recordings
223 Lafayette Road
North Hampton, NH 03862
www.parmarecordings.com

PreSonus Audio
7257 Florida Boulevard
Baton Rouge, LA 70806
www.presonus.com

Presskit.to
24 Spice Street
Main Floor
Suite #2
Charlestown, MA 02129
www.presskit.to

Routledge/Taylor & Francis
711 3rd Ave.
8th Floor
New York, NY 10017
www.taylorandfrancis.com

The Scholar's Choice
25 Franklin Street
#1260
Rochester, NY 14604
www.scholarschoice.com

Sonic Crossroads
214 Belgrade Street
Philadelphia, MA 19125
www.soniccrossroads.com

Steingraeber Pianos
25 S Wickham Road
Melbourne, FL 32904
steingraeberpianos.com

Tristan Arts
4672 Davenport Avenue
Oakland, CA 94619
www.tristanarts.com

Vermont College of Fine Arts
36 College Street
Montpelier, VT 05602
www.vcfa.edu

W.W. Norton & Company, Inc.
500 Fifth Avenue
New York, NY 10110
www.wwnorton.com

Yamaha Corporation
PO Box 6600
Buena Park, CA 90622
www.yamaha.com

CMS ROBERT M. TROTTER LECTURES

1994: RICARDO D. TRIMILLOS (UNIVERSITY OF HAWAII AT MANOA)
"WESTERN MUSIC AND THE ETHNOMUSICOLOGIST'S GAZE: THEORY, PRAXIS, AND PERFORMANCE VIEWED BY A FILIPINO-AMERICAN WITH LUTHERAN LEANINGS"

1995: EILEEN CLINE (JOHNS HOPKINS UNIVERSITY)
"MY FATHER NEVER TOLD ME . . ."

1996: LEON BOTSTEIN (PRESIDENT, BARD COLLEGE)
"IS THERE A FUTURE FOR THE TRADITIONS OF MUSIC AND MUSIC TEACHING IN OUR COLLEGES AND UNIVERSITIES?"

1997: ROBERT GLIDDEN (PRESIDENT, OHIO UNIVERSITY)
"PREPARING FOR PRIDE AND PERFORMANCE IN THE PROFESSORiate"

1998: DONALD THOMPSON (UNIVERSITY OF PUERTO RICO)
"MUSICAL PUERTO RICO: MICROCOSM IN THE MAINSTREAM"

1999: BRUNO NETTL (UNIVERSITY OF ILLINOIS)
"PRESERVING MUSICAL CULTURES: CONTEMPLATIONS AND CONFESSIONS"

2000: ALEXANDER RINGER (UNIVERSITY OF ILLINOIS AT CHAMPAIGN-URBANA)
"EDUCATION THROUGH MUSIC: THE DREAM AND THE REALITY"

2001: ANTHONY SEEGER (UNIVERSITY OF CALIFORNIA-LOS ANGELES)
"CHANGING LIVES WITH RECORDED SOUND:
RECORDINGS AND PROFOUND MUSICAL EXPERIENCES"

2002: DOROTHY PAYNE (UNIVERSITY OF SOUTH CAROLINA)
"IN PRAISE OF MENTORS"

2003: GUNTHER SCHULLER (NEWTON CENTRE, MASSACHUSETTS)
"ARE WE DOING ENOUGH FOR GOOD MUSIC?"

2004: TIM PAGE (WASHINGTON, D.C.)
"DEADLINE? THE FALL AND RISE OF CLASSICAL MUSIC CRITICISM"

2005: CHRISTOPHER WATERMAN (UNIVERSITY OF CALIFORNIA-LOS ANGELES)
"MUSICAL REFLECTIONS: HEARING OURSELVES AND OTHERS"

2006: JUDITH LANG ZAIMONT (UNIVERSITY OF MINNESOTA-MINNEAPOLIS)
"IMAGING THE COMPOSER IN 2006"

2007: ROBERT J. WERNER (UNIVERSITY OF CINCINNATI)
"A DISTINGUISHED HISTORY: A CHALLENGING FUTURE"

2008: SAMUEL A. FLOYD, JR. (CENTER FOR BLACK MUSIC RESEARCH)
"RUMINATIONS ON THE CENTER FOR BLACK MUSIC RESEARCH
AND THE PROFESSION AT-LARGE"

2009: LAWRENCE KRAMER (FORDHAM UNIVERSITY)
"CLASSICAL MUSIC AND THE POSTHUMAN CONDITION"

2010: DAVID E. MYERS (UNIVERSITY OF MINNESOTA-TWIN CITIES)
"MUSIC AND THE PUBLIC GOOD: CAN HIGHER EDUCATION FULFILL THE
CHALLENGES AND OPPORTUNITIES OF THE 21ST CENTURY?"

2011: BEN CAMERON (DORIS DUKE CHARITABLE FOUNDATION)
"CULTURAL RESPONSES TO ECONOMIC CHALLENGES:
NEW ANSWERS TO OLD QUESTIONS"

2012: JOE LAMOND (NATIONAL ASSOCIATION OF MUSIC MERCHANTS)
"CREATIVE CONVERGENCE—MUSIC AND COMMERCE: CELEBRATING A
SHARED MISSION, EXPLORING COLLABORATION"

2013: JOAN TOWER (INDEPENDENT COMPOSER)
"DEVELOPING A COMPOSITIONAL VOICE"

2013 PLENARY SPEAKERS



Robert M. Trotter Lecture:
Developing a Compositional Voice
Joan Tower
Thursday, October 31
3:00 p.m.
Ballroom D

Joan Tower is widely regarded as one of the most important American composers living today. During a career spanning more than fifty years, she has made lasting contributions to musical life in the United States as composer, performer, conductor, and educator. Her works have been commissioned by major ensembles, soloists, and orchestras, including the Emerson, Tokyo, and Muir quartets; soloists Evelyn Glennie, Carol Wincenc, David Shifrin, and John Browning; and the orchestras of Chicago, New York, St. Louis, Pittsburgh, and Washington DC among others. Tower was the first composer chosen for a Ford Made in America consortium commission of sixty-five orchestras. Leonard Slatkin and the Nashville Symphony recorded *Made in America* in 2008 (along with *Tambor* and *Concerto for Orchestra*). The album collected three Grammy awards: Best Classical Contemporary Composition, Best Classical Album, and Best Orchestral Performance. In 1990 she became the first woman to win the prestigious Grawemeyer Award for *Silver Ladders*, a piece she wrote for the St. Louis Symphony where she was Composer-in-Residence from 1985–88. Other residencies with orchestras include a 10-year residency with the Orchestra of St. Luke’s (1997–2007) and the Pittsburgh Symphony (2010–2011). Tower studied piano and composition at Bennington College and Columbia University. Her earliest works were serial in concept, but her music soon developed the lyricism, rhythmic drive, and colorful orchestration that characterize her subsequent works. She co-founded the Da Capo Chamber Players in 1969 as pianist—its accolades included the 1973 Naumburg Chamber Music Award—but also wrote several well-received pieces for the ensemble. She is currently Asher Edelman Professor of Music at Bard College, where she has taught since 1972. Her music is published by Associated Music Publishers. ♦

Are you interested in contacting a conference attendee but didn’t have the chance to exchange business cards?

The Member Search function on the CMS website can help!

Just log in to the CMS website at www.music.org and select “CMS Members” from the “Search CMS” pulldown menu.

CMS/ATMI LECTURES IN MUSIC TECHNOLOGY

1995: FRED HOFSTETTER (UNIVERSITY OF DELAWARE):
"USING MULTIMEDIA TO BRING REALITY OF THE VIRTUAL CLASSROOM"

1996: JONATHAN BERGER
(YALE UNIVERSITY CENTER FOR STUDIES IN MUSIC TECHNOLOGY):
"CONNECTED TO WHAT?"

1997: MORTON SUBOTNIK (CALIFORNIA INSTITUTE OF THE ARTS):
"THE CHALLENGE OF INTERACTIVE MEDIA"

1998: JOEL CHADABE (STATE UNIVERSITY OF NEW YORK, ALBANY):
"RESOURCES AND RESULTS"

1999: ALEXANDRA WALSH (RECORDING INDUSTRY ASSOCIATION OF AMERICA):
"TECHNOLOGICAL INNOVATIONS AND THE ON-LINE MUSICAL MARKETPLACE"

2000: TOD MACHOVER (MASSACHUSETTS INSTITUTE OF TECHNOLOGY):
"TECHNOLOGY AND FUTURE MUSIC EDUCATION"

2001: TONY ISAACS (INDIAN HOUSE RECORDINGS):
"TECHNOLOGY AND MUSIC—WHO'S IN THE DRIVER'S SEAT?"

2002: LIBBY LARSEN (MINNEAPOLIS, MINNESOTA):
"THE NEW FACE OF COMPOSITION"

2003: ROBERT WINTER (UNIVERSITY OF CALIFORNIA—LOS ANGELES):
"WHICH CAME FIRST, THE CHICKEN OR THE EGG?:
CONTENT AND TECHNOLOGY IN THE DIGITAL AGE"

2004: TOD MACHOVER (MASSACHUSETTS INSTITUTE OF TECHNOLOGY):
"BEYOND HI-TECH"

**2005: ANN BLOMBACH (THE OHIO STATE UNIVERSITY),
MICHAEL ARENSON (UNIVERSITY OF DELAWARE), AND
DAVID B. WILLIAMS (ILLINOIS STATE UNIVERSITY):**
"VIGNETTES FROM ATMI'S THIRTY YEARS:
THE LITTLE ORGANIZATION THAT COULD!"

2006: HENRY PANION III (UNIVERSITY OF ALABAMA—BIRMINGHAM):
"A TALE OF TWO CITIES: THE USE OF MUSIC TECHNOLOGY IN THE
CLASSROOM AND THE MUSIC PROFESSION"

2007: GIL WEINBERG (GEORGIA INSTITUTE OF TECHNOLOGY):
"EXTENDING THE MUSICAL EXPERIENCE—
FROM THE PHYSICAL TO THE DIGITAL AND BACK"

2008: PAULINE OLIVEROS (DEEP LISTENING INSTITUTE):
"TELEMATICS: AN EXPANDED VENUE FOR PERFORMANCE AND EDUCATION"

2009: ROGER B. DANNENBERG (CARNEGIE MELLON UNIVERSITY):
"THE MUSIC TECHNOLOGY REVOLUTION"

2010: ELAINE CHEW (UNIVERSITY OF SOUTHERN CALIFORNIA):
"DE-MYSTIFYING MUSIC AND ITS PERFORMANCE THROUGH
SCIENCE AND TECHNOLOGY"

2011: DOUGLAS IRVING REPETTO (COLUMBIA UNIVERSITY)
"DOING IT WRONG: THE VALUE OF CREATIVE RESEARCH"

2012: DAVID COPE (UNIVERSITY OF CALIFORNIA—SANTA CRUZ)
"ON TEACHING MUSICAL STYLE"

2013: MITCHEL RESNICK (MIT LIFELONG KINDERGARTEN GROUP)
"LIFELONG KINDERGARTEN: IMAGINE, CREATE, PLAY, SHARE"

2013 PLENARY SPEAKERS



CMS/ATMI Music Technology Lecture:
Lifelong Kindergarten: Imagine, Create, Play, Share
Mitchel Resnick
Friday, November 1
8:00 a.m.
Ballroom D

Mitchel Resnick, LEGO Papert Professor of Learning Research and head of the Lifelong Kindergarten group at the MIT Media Lab, explores how new technologies can engage people in creative learning experiences. Resnick's research group developed the "programmable brick" technology that inspired the LEGO Mindstorms robotics kit. He co-founded the Computer Clubhouse project, a worldwide network of after-school centers where youth from low-income communities learn to express themselves creatively with new technologies. Resnick's group also developed Scratch, an online community where children program and share interactive stories, games, and animations. He earned a BA in physics at Princeton University (1978), and MS and PhD degrees in computer science at MIT (1988, 1992). He worked as a science-technology journalist from 1978 to 1983, and he has consulted throughout the world on creative uses of computers in education. He is author of *Turtles, Termites, and Traffic Jams* (1994), co-editor of *Constructionism in Practice* (1996), and co-author of *Adventures in Modeling* (2001). In 2011, Resnick was awarded the McGraw Prize in Education. ♦

THE 2014 CMS SUMMIT: *MUSIC SCIENCE & SOCIETY*

MAY 16-17, 2014 • SEATTLE, WASHINGTON

- Embrace issues of our time at the nexus of music, science, & society
- Apply recent research to articulate the value—and power—of music & musical study

The 2014 Summit will examine research-based understandings of:

- what transpires in the processes of performing & participating in music within deep listening experiences
- the expressive practices of performing & composing-improvising
- the integral & holistic involvements of the ear, the brain, & the body in musicking acts

Currently active experts will help us consider:

- recent scientific research & writing
- the nature of the professional education of university music students
- student's lifelong musical involvement & their active service in the musical engagement of others
- a broad spectrum of issues—from cognitive to neuromusical to sociomusical perspectives
- the articulation of a contemporary rationale for the formal study of music & the less formal musical participation in community settings
- the research basis for understanding the relationships between music & meaningful constructs such as joy, solace, social cohesion, & spirituality.

Plenary sessions by:

- **Ian Cross**, Cambridge University (psychologist with specializations in music as social & cognitive process, and music & biocultural evolution)
- **Steven Friedson**, University of North Texas (anthropologist & ethnomusicologist, expert on music & trance)
- **Laurel Trainor**, McMaster University (specialist on plasticity of the brain, maturation & the musical experience)

TO LEARN MORE VISIT THE CMS WEBSITE AT WWW.MUSIC.ORG!



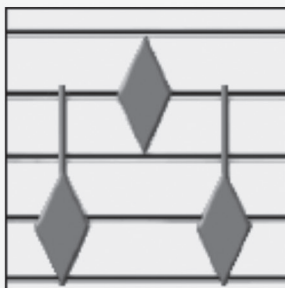
PRACTICA MUSICA®

Complete music
theory and ear
training for Windows
and Macintosh

- Over 200 learning activities cover a wide range of difficulty
- Full score reporting available online to instructors
- Includes digital textbook *Exploring Theory*
- Low cost Student Edition available by download or on flash drive
- Evaluation copies available on request
"A masterpiece of interactive pedagogy"
- Education Update

Counterpointer™

Interactive software
for counterpoint study



- Evaluates writing in all 5 species
- Evaluates free counterpoint in Bach vocal or Palestrina style
- Includes exercises in realizing Roman numerals or figured bass
- Adjustable style rules for free counterpoint
- Hear and print compositions

Evans: *Exploring Theory*

New 4th Edition now available as an iBook,
with expanded live examples and chapter
quizzes.



Ars Nova Software • ars-nova.com
info@ars-nova.com

2014 CMS REGIONAL CONFERENCES

CMS Regional Conferences take place each spring and provide invigorating forums for dialogue, learning, collaborating, and professional networking. The relatively modest size of these gatherings allows for ample time to get to know others who share a passion for music, teaching, and learning. Papers, lecture-recitals, and performances, often including concerts of new music by CMS composers, offer intellectual and artistic stimulation. Details regarding CMS Regional Conferences may be found on the CMS website at www.music.org.

Southern/Mid-Atlantic Joint Regional Conference

February 13–15, 2014
University of Tennessee-Knoxville
Knoxville, Tennessee

33rd Great Plains Regional Conference

March 7–8, 2014
William Jewel College
Liberty, Missouri

29th South Central Regional Conference

March 7–8, 2014
University of Arkansas–Fort Smith
Fort Smith, Arkansas

29th Rocky Mountain Regional Conference

March 21–22, 2014
Metropolitan State University of Denver
Denver, Colorado

32nd Great Lakes Regional Conference

March 28–29, 2014
North Dakota State University
Fargo, North Dakota

35th Northeast Regional Conference

April 4–5, 2014
The Crane School of Music at SUNY-Potsdam
Potsdam, New York

27th Pacific Northwest Regional Conference

April 11–12, 2014
The University of Montana
Missoula, Montana



THURSDAY, OCTOBER 31

7:30 a.m.–5:00 p.m.
Conference Registration

Foyer

1:00–3:00 p.m. President's Pre-Function & 1st Floor Hallways
Exhibitor Tables Open

Thursday, October 31

8:00–9:00 a.m. Molly Pitcher
Pedagogy

Chair: Brendan P. McConville (University of Tennessee–Knoxville)
8:00 DEMO: *Teaching Class Piano for Non-music Majors Online vs. Face to Face*
Shane Anderson (Texas A&M University–Corpus Christi)

8:30 PAPER: *What Does a 21st Century Music Teacher Have in Common With Big Foot? Examining the Role of Music Technology Instructors*
Radio Cremata (Ithaca College)
Bryan Powell (Bergen Community College)

8:00–9:15 a.m. Crispus Attucks
Online Coursework

Chair: Kathleen Maskell (Regis College)
8:00 PAPER: *It's Free: Mining the Treasures of Creative Commons, Public Domain, and other Sources for University Courses and Applied Lessons*
Terry Ewell (Towson University)

8:30 PAPER: *Crossing Borders: Using HD Videoconferencing in Developing Countries*
George Hess (Yong Siew Toh Conservatory of Music)

9:00–9:55 a.m. Ballroom D
2013 Common Topic Panel: *Inclusivity and Invention*

Moderator: William A. Everett (University of Missouri–Kansas City)
Panelists:
Joyce Waterhouse Gibson (Metropolitan State University of Denver)
Samuel J. Hamm (Rocky Mountain College)
Andrew Houchins (Emporia State University)
Susan M. Piagentini (Northwestern University)
Holly K. Roadfeldt-O'Riordan (Lafayette College)
Ann L. Silverberg (Austin Peay State University)
Jennifer Snodgrass (Appalachian State University)

9:15–10:45 a.m. Molly Pitcher
Creating Interactive Course Materials

Chair: Gena R. Greher (University of Massachusetts Lowell)
9:15 PAPER: *eBooks and iBooks: Creating and Programming Multimedia Books*
Cynthia I. Gonzales (Texas State University–San Marcos)

10:00 DEMO: *Developing Interactive Course Material*
Michael Krajewski (Minnesota State University–Moorhead)

9:30–11:00 a.m. Crispus Attucks
Curricular Insights

Chair: Scott L. Phillips (University of Alabama–Birmingham)
9:30 PAPER: *The Potential Impact of Music Technology on Interdisciplinary Studies Involving Music*
Fred J. Rees (Indiana University–Purdue University)

10:15 DEMO: *YouTube-A-Day: Using Smartphone and iPad Technology to Enhance Sight Reading*
Claudia M. Bossard (Vincennes University)

10:00–10:55 a.m. Haym Saloman

DEMONSTRATION: *Unexpected Engagement*

Moderator: Suzanne L. Burton (University of Delaware)

Panelists:

- Katie Carlisle (Georgia State University)
- James M. Day (The College of New Jersey)
- Keitha Lucas Hamann (University of Minnesota–Twin Cities)
- Lee D. Higgins (Boston University)
- Michael W. Millar (California State Polytechnic University–Pomona)
- Kristin Wendland (Emory University)

Chair: Thomas Scahill (New England Conservatory)

10:00–10:55 a.m. Ballroom A

WORKSHOP: *Embodied Pedagogy: Music and Dance of India*

Carol M. Babiracki (Syracuse University)

Sarah Morelli (University of Denver)

Natalie Sarrazin (The College at Brockport)

Chair: Robin E. Armstrong (McDaniel College)

10:00–10:55 a.m. Ballroom B

FORUM: *Building Inclusivity in the Exclusive Academy*

Moderator: John P. Gaulty (Cabrillo College)

Panelists:

- Harold F. Abeles (Teachers College/Columbia University)
- Alicia M. Doyle (California State University–Long Beach)
- Robert J. Jones (North Dakota State University)
- Mary Ellen Junda (University of Connecticut)
- David R. Montano (University of Denver)

Chair: Scott T. Brickman (University of Maine–Fort Kent)

11:00–11:55 a.m. Haym Saloman

PANEL: *Improvisation and the University Music Curriculum: Preparing Preservice Teachers for the Future*

Moderator: H. Christian Bernhard, II (SUNY–Fredonia)

Panelists:

- Paul T. Murphy (State University of New York–Fredonia)
- Jill A. Reese (State University of New York–Fredonia)

Chair: Douglas T. Owens (Old Dominion University)

11:00–11:55 a.m. Ballroom A

PANEL: *Assessment in Applied Music Courses: When to Jury or Not to Jury is Just the Tip of the Iceberg*

Panelists:

- Francesca M. Arnone (Baylor University)
- Heather MacLaughlin Garbes (Mägi Ensemble)
- Deborah G. Nemko (Bridgewater State University)

Chair: Robin E. Armstrong (McDaniel College)

11:00–11:55 a.m. Ballroom B

PANEL: *Best Practices for Establishing an Ongoing and Meaningful Collaboration between Those Who Design Music Products and Those Who Use and Teach with Them*

Moderator: Don Bowyer (Arkansas State University)

Panelists:

- Catherine Fitterman Radbill (New York University)
- Kim L. Wangler (Appalachian State University)

Chair: Manabu K. Takasawa (University of Rhode Island)

11:00 a.m.–12:00 p.m. Molly Pitcher

Informal & Intuitive Learning through Technology

Chair: Alex Ruthmann (New York University)

11:00 PAPER: *Collaborative Music Learning: Harnessing the Power of*

Intuitions and Technology

Michael Downton (Indiana University)

11:30 PAPER: *The S.O.L.E. of Noteflight (Self Organized Learning Environment)*

Savannah Marshall (University of Massachusetts Lowell)



THURSDAY, OCTOBER 31

Thursday, October 31

11:15 a.m.–12:00 p.m.

Applications in Performance

Crispus Attucks

PERFORMANCE: *Big Sound, Small Devices: A Compact Solo Electronic Music Performance*

Matthew Harder (West Liberty University)

Chair: Michael Krajewski (Minnesota State University–Moorhead)

12:05–12:50 p.m.

Lunchtime Concert Series: Libana

Charles View Ballroom

Chair: Patricia Shehan Campbell (University of Washington)

* Open to all conference attendees

* Lunch options available for purchase

* See page 14 for group bio

1:00–1:55 p.m.

Special Interest Group: CAI Theory/Aural Skills

Crispus Attucks

1:00–1:55 p.m.

Special Interest Group: Music Technology Curriculum & Training

Crispus Attucks

1:00–1:55 p.m.

Special Interest Group: Distance Education

Molly Pitcher

1:00–1:55 p.m.

Special Interest Group: Music Lab Management

Aquarium

1:00–1:55 p.m.

Special Interest Group: Multimedia Development

William Garrison

1:00–1:55 p.m.

DEMONSTRATION: *The Paradox of Preparation*

Haym Saloman

Janet R. Barrett (University of Illinois at Urbana–Champaign)

Cathy L. Benedict (Florida International University)

Susan W. Conkling (Boston University)

Maud Hickey (Northwestern University)

Linda K. Thompson (Lee University)

Betty Anne Younker (University of Western Ontario)

Chair: Manabu K. Takasawa (University of Rhode Island)

1:00–1:55 p.m.

PANEL: *Focus on Transitioning into and out of Administration:*

Ballroom B

One Step Forward, Two Steps Back

Moderator: Francesca M. Arnone (Baylor University)

Panelists:

Alfred W. Blatter (Curtis Institute of Music)

Bernard J. Dobroski (Northwestern University)

Terry Lynn Hudson (Baylor University)

James C. Scott (University of North Texas)

Virginia M. Thompson (West Virginia University)

Chair: Susan Piagentini (Northwestern University)

1:00–2:25 p.m.

PANEL: *2013 Summit Report: Developing the Artist Citizen*

Ballroom A

Moderator: William A. Everett (University of Missouri–Kansas City)

Panelists:

Donna T. Emmanuel (University of North Texas)

Laurence D. Kaptain (Louisiana State University)

Matt Swanson (University of Washington)

Chair: Marie Nelson (University of Massachusetts–Dartmouth)

1:00–2:55 p.m.

OPEN HEARING: *Transformative Change in the Undergraduate Music Major Curriculum*

Thomas Paine A

Patricia Shehan Campbell (University of Washington)

Juan Chattah (University of Miami)

David E. Myers (University of Minnesota–Twin Cities)

Ed Sarath (University of Michigan)

Gail Hilson Woldu (Trinity College)

1:00–2:25 p.m. Ballroom D
Performances of New Music I

Concert Manager: Arthur Gottschalk (Rice University)

Las calles de Buenos Aires Murray Gross
The Scott/Garrison Duo with Rajung Yang

Trifecta Yorubana Ayo Oluranti
The Scott/Garrison Duo with Rajung Yang

Techno-Parade (2002) Guillaume Connesson
The Scott/Garrison Duo with Rajung Yang

Canopy of Night Jason Hoogerhyde
Trio Florida

Orchid Gary Smart
Trio Florida

Fractures of Elysium Ethan F. Wickman
Trio Florida

1:30–2:30 p.m. Thomas Paine B
Focus Group: Presskit.to

Join us for a moderated discussion regarding new strategies for student/alumni engagement and fundraising. Presskit.to is a data-driven, digital portfolio solution for the arts.

2:00–2:55 p.m. Crispus Attucks
Rethinking Pedagogy

Chair: Susan M. Piagentini (Northwestern University)

PAPER: *Reimagining Music Education: A discussion of the potential role of the Professional Composer/Producer in the Context of Music Learning Communities*

Christopher Mangum (Nassau BOCES)

Jason M. Gaines (Bronx, New York)

2:00–2:55 p.m. Molly Pitcher
Developing Facilities for Instruction

Chair: Pamela D. Pike (Louisiana State University)

DEMONSTRATION: *MusicXML and its Implications for Composition, Performance, and Scholarship*

George F. Litterst (Cyber Conservatory)

Frank M. Weinstock (Cyber Conservatory)

2:00–2:55 p.m. Ballroom B
Panel: Career Opportunities in Music Nonprofit Organizations

Moderator: Karen Zorn (Longy School of Music)

Panelists:

Angela Beeching (Manhattan School of Music)

Bernard J. Dobroski (Northwestern University)

Lee D. Higgins (Boston University)

Michael W. Millar (California State Polytechnic University–Pomona)

Chair: James E. Perone (University of Mount Union)

2:00–2:55 p.m. Haym Saloman
Panel: The Future of the Society—A National Perspective on CMS Student Chapters

Moderators: Gene S. Trantham (Bowling Green State University) and

Jennifer Sterling Snodgrass (Appalachian State University)

Panelists:

Katherine Burkhalter (Appalachian State University)

Gregory D. Carroll (University of North Carolina–Greensboro)

Kevin W. Gerrity (Ball State University)

Amanda Huntleigh (University of Washington)

Peter J. Learn (University of Miami)

Reeves Shulstad (Appalachian State University)

Christopher Swanson (Longwood University)



THURSDAY, OCTOBER 31

2:30–2:55 p.m. **Ballroom A**

PAPER: *Artistic Citizenship: How do we get there?*

Constance Cook Glen (Indiana University–Bloomington)

Chair: Janet R. Barrett (University of Illinois at Urbana–Champaign)

3:00–3:55 p.m. **Ballroom D**

Robert M. Trotter Lecture

Developing a Compositional Voice

Joan Tower (Independent Composer)

Chair: Patricia Shehan Campbell (University of Washington)

Introductory Remarks: David B. Williams

(Illinois State University, emeritus)

4:00–4:55 p.m. **Ballroom D**

CMS Fishbowl Discussion

Moderator: Janet R. Barrett (University of Illinois at Urbana–Champaign)

Invited Guest: Joan Tower (Independent Composer)

* See the conference website for a description of this event

4:00–4:55 p.m. **Crispus Attucks**

Applications in Performance

Chair: Mike Testa (University of Massachusetts Lowell)

4:00 PERFORMANCE: *The Art and Beauty of Live Laptop Performance*

Richard D. Hall (Texas State University–San Marcos)

4:30 *The Penn's Woods Project: Music, Nature, and Technology*

Lynn Emberg-Purse (Duquesne University)

4:00–4:55 p.m. **Molly Pitcher**

Online Learning

Chair: Kimberly C. Walls (Auburn University–Auburn)

4:00 *Connectivism and the Cloud: Current Web 2.0 Pedagogical*

Communities for Music Teaching and Learning

Brendan P. McConville (University of Tennessee–Knoxville)

Gene D. Peterson (University of Tennessee–Knoxville)

4:30 *Using Blackboard's Self and Peer Assessment Tools for Creative*

"Juicing"

Sara L. Hagen (Valley City State University)

5:00–5:45 p.m. **Charles View Ballroom**

Welcome Reception

* Open to all conference attendees

* Use this time to network with colleagues

* Light hors d'oeuvres provided (does not constitute a full meal)

* No-host bar

5:45–6:45 p.m. **Charles View Ballroom**

HONK!: Feel the Power of Performance

Chair: Patricia Shehan Campbell (University of Washington)

* *Participatory Music Making with Reebee Garofola & friends*

* *Bring your own brass, wind, or any percussion instrument!*

* *Some instruments will be provided*

8:00–9:30 p.m. **Charles View Ballroom**

New England Contradance

Chair: Patricia Shehan Campbell (University of Washington)

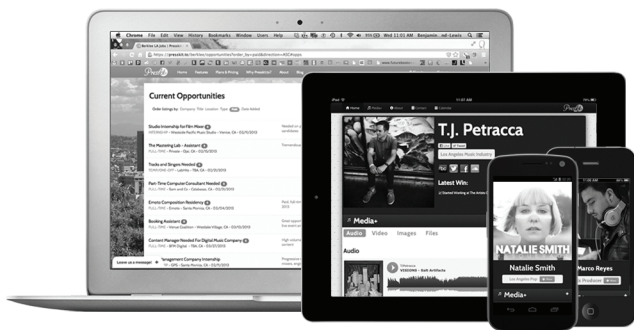
* *Participatory Music Making with George Marshall & Wild Asparagus*

* *Wear comfortable clothing for movement*

* *Open to all conference attendees*

Thursday, October 31

**College Music Symposium now online:
<http://symposium.music.org>**



**THERE'S A BETTER WAY TO
ENGAGE YOUR COMMUNITY.**

Your students & alumni deserve it. We help you do it.

PLEASE JOIN US
*for a moderated discussion
regarding new strategies for
student and alumni
engagement & fundraising!*

**Thursday, October 31st, 2013
1:30PM-2:30PM
Rm. Thomas Paine B**

COME CHAT WITH US AT
TABLE #33

AIDAN RUSH
SENIOR ACCOUNT MANAGER

1-888-554-6343 x708
AIDAN@PRESSKIT.TO

www.Presskit.to/HigherEd



FRIDAY, NOVEMBER 1

7:30 a.m.–5:00 p.m. **Foyer**
Conference Registration

8:00 a.m.–5:00 p.m. **President's Pre-Function & 1st Floor Hallways**
Exhibitor Tables Open

8:00–8:55 a.m. **Ballroom D**
CMS/ATMI Music Technology Lecture

Lifelong Kindergarten: Imagine, Create, Play, Share
Mitchel Resnick (MIT Lifelong Kindergarten Group)
Assisted by Eric Rosenbaum (Massachusetts Institute of Technology)
Chair: Alex Ruthmann (New York University), ATMI President

9:00–9:25 a.m. **Ballroom A**

PAPER: *From Local Tradition to Drum Corps International*
Denise Odello (University of Minnesota–Morris)
Chair: Jennifer CHJ Wilson (The Graduate Center, CUNY)

9:00–9:25 a.m. **Ballroom D**

PERFORMANCE: *Voces Boreales (Northern Voices)*
Yoko Hirota (Laurentian University)
Chair: Jerome Mouffe (Bridgewater State University)

9:00–9:55 a.m. **Haym Saloman**

WORKSHOP: *Piano Pedagogical Strategies for Children with Special Needs*
Melissa Martiros (Martin Methodist College)
Chair: Gene S. Trantham (Bowling Green State University)

9:00–9:55 a.m. **Ballroom B**

PANEL: *Mentoring Minority Faculty*
Moderator: George Torres (Lafayette College)
Panelists:
Eric Hing-Tao Hung (Westminster Choir College)
Margaret E. Lucia (Shippensburg University)
Deborah G. Nemko (Bridgewater State University)
Deborah Schwartz-Kates (University of Miami)
Marissa D. Silverman (Montclair State University)
Chair: Douglas T. Owens (Old Dominion University)

9:00–10:15 a.m. **Molly Pitcher**

Innovative Curriculum

Chair: Damon W. Sink (Western Carolina University)
9:00 DEMO: *What is the "Next" Musician?*
V. Keith Mason (Belmont University)

9:45 *Why Put a Round Peg in a Square Hole? – Examining Music Technology Education in "Vocational-Type" Contexts*
Radio Cremata (Ithaca College)
Bryan Powell (Bergen Community College)

9:00–10:30 a.m. **Crispus Attucks**

NASM and Music Tech Standards

Chair: William I. Bauer (University of Florida)
9:00 PAPER: *Navigating the new NASM Standards for Music Technology Programs*
Scott L. Phillips (University of Alabama–Birmingham)

10:00 PAPER: *Computer-based Notation as a Core-competency for Music Technology: Is there Agreement upon what Should be Covered?*
Charles P. Menoche (Central Connecticut State University)

9:30–9:55 a.m. **Ballroom A**

PAPER: *Violins of Hope: Eight Instruments Recovered from the Holocaust*
James A. Grymes (University of North Carolina–Charlotte)
Chair: Jennifer CHJ Wilson (The Graduate Center, CUNY)

9:30–9:55 a.m. Ballroom D

LECTURE/RECITAL: *Playing with Ghosts: Unpublished Violin Music*
by Charles Martin Loeffler
Robert Conway (Wayne State University)
Laura Leigh Roelofs (Wayne State University)
Chair: Keith E. Clifton (Central Michigan University)

9:30–10:30 a.m. Aquarium

Focus Group: Cengage

Media and Music Appreciation: Get Students to Listen to Music,
Not Just Hear It. Join us for a focus group that will explore Music
Appreciation instruction in the modern classroom.

10:00–10:25 a.m. Haym Saloman

PAPER: *Music Educators' Perceptions of the Value of Courses in Their
Undergraduate Music Teacher Education Programs*
Timothy J. Groulx (University of Evansville)
Chair: Maud Hickey (Northwestern University)

10:00–10:25 a.m. Ballroom A

PAPER: *Joan Tower's Compositions for Brass Instruments*
Craig B. Parker (Kansas State University)
Chair: Irene Girton (Occidental College)

10:00–10:25 a.m. Ballroom D

LECTURE/RECITAL: *"Four Poems op. 5" by Charles Martin Loeffler: A Boston
Composer's Exploration of Decadence*
Robert J. Jones (North Dakota State University)
Chair: Keith E. Clifton (Central Michigan University)

10:00–10:55 a.m. Ballroom B

PANEL: *Senior Citizens' Music Participation and Quality of Life: Two
Contrasting Case Studies*
Moderator: C. Victor Fung (University of South Florida)
Panelists:
C. Victor Fung (University of South Florida)
Lisa J. Lehmberg (University of Massachusetts–Amherst)
Chair: Scott T. Brickman (University of Maine–Fort Kent)

10:15 a.m.–12:00 p.m. Molly Pitcher

Applications of Technology in Instruction

Chair: Terry Ewell (Towson University)
10:15 PAPER: *I Want You to Want Me: Informal Blended Faculty
Development*
Jordan Mroziak (Duquesne University)
Judith A. Bowman (Duquesne University)

11:00 PAPER: *Sound Concepts: An Interactive Application for Exploring
the Fundamentals of Sound*
Timothy Nord (Ithaca College)

11:30 DEMO: *Refocusing the Lens: Creating Engaging Music Learning
Communities after Bring Your Own Device Implementation*
Jason M. Gaines (Bronx, New York)

10:30–10:55 a.m. Ballroom A

PAPER: *Splashing on the Concert Stage: An Ecomusicological Reading of
Tan Dun's "Water" Works*
Eric Hing-Tao Hung (Westminster Choir College)
Chair: Nancy H. Barry (Auburn University–Auburn)

10:30–10:55 a.m. Ballroom D

LECTURE/RECITAL: *Arthur P. Schmidt, Boston, Champion of the
American Composer*
Peggy A. Holloway (University of Nebraska–Omaha)
Nanette Kaplan Solomon (Slippery Rock University)
Chair: Deborah G. Nemko (Bridgewater State University)



10:30–10:55 a.m. **Haym Saloman**
PAPER: *Tradition, Method, and Juxtaposition: A Framework for Examining and Reconceptualizing Music Education Curricula*
Frank Heuser (University of California–Los Angeles)
Chair: Maud Hickey (Northwestern University)

10:30–11:30 a.m. **Thomas Paine B**
Focus Group: MakeMusic, Inc.
Years ago, Finale WAS hard to use. If you tried (or learned) Finale then, this clinic's for you. See how easy Finale has become AND learn tips on using it most efficiently.

10:30 a.m.–12:00 p.m. **Crispus Attucks**
NASM and Music Tech Standards Progress Report
Chair: Alex Ruthmann (New York University)
10:30 PAPER: *Defining Undergraduate Music Technology Competencies and Strategies for Learning: A Third-Year Progress Report*
David B. Williams (Illinois State University, emeritus)
Peter R. Webster (University of Southern California)

11:30 PAPER: *Music Technology in the NASM Standards for Music Programs*
Scott L. Phillips (University of Alabama–Birmingham)

11:00–11:25 a.m. **Haym Saloman**
PAPER: *Reinventing Schubert through Bach and Vice Versa: Intertext as a Potent Pedagogical Tool*
Dina Lentsner (Capital University)
Chair: Mario J. Pelusi (Illinois Wesleyan University)

11:00–11:25 a.m. **Ballroom D**
LECTURE/RECITAL: *21st Century Approach to Classical Music— a Multimedia Recital of Vocal Music by Living American Composers*
Nancy Maria Balach (University of Mississippi)
Stacy D. Rodgers (University of Mississippi)
Chair: Stephanie Berg Oram (Red Rocks Community College)

11:00–11:55 a.m. **Ballroom A**
WORKSHOP: *Cross-Curricular and Community Partnerships: Redesigning Traditional Music Offerings for Greater Impact*
Ryan M. Hourigan (Ball State University)
John W. Scheib (Ball State University)
Chair: Jason B. Sprankle (Central Carolina Technical College)

11:00–11:55 a.m. **Ballroom B**
PANEL: *Lightning Answers to Burning Questions Round 2: The Student and Faculty Perspective*
Moderators: Gene S. Trantham (Bowling Green State University) and Jennifer Sterling Snodgrass (Appalachian State University)
Panelists:
Katherine Burkhalter (Appalachian State University)
Gregory D. Carroll (University of North Carolina–Greensboro)
Kevin W. Gerrity (Ball State University)
Amanda Huntleigh (University of Washington)
Peter J. Learn (University of Miami)
Reeves Shulstad (Appalachian State University)
Christopher Swanson (Longwood University)

11:30–11:55 a.m. **Haym Saloman**
DEMONSTRATION: *Roll Over, Mozart: Improvisation and Composition Exercises that Bring Creativity to Piano Instruction*
Jennifer Muñiz (Indiana University–South Bend)
Chair: Mario J. Pelusi (Illinois Wesleyan University)

11:30 a.m.–12:30 p.m. **William Garrison**
Focus Group: CMS Books & Monographs: Meet the Editors
Calling all experienced & aspiring authors! CMS's Books & Monograph series editors share procedures for developing and submitting proposals, tips for preparing manuscripts, insights into the book review process and future directions for Books & Monographs.

12:00–1:25 p.m. MIT Stratton Student Center
CMS Student Luncheon

- * All CMS student members are encouraged to attend
- * This is a no-host event—lunch options available for purchase
- * Gather near the conference registration desk at noon

12:15–12:45 p.m. Ballroom D
Lunchtime Concert Series: Vong Pleng Khmer

- Chair: Patricia Shehan Campbell (University of Washington)
- * Open to all conference attendees
 - * Lunch options available for purchase
 - * See page 14 for group bio

1:00–1:25 p.m. Haym Saloman

- PAPER: *A Musical Health Promotion Model: Addressing the New NASM Standard*
 Judith A. Palac (Michigan State University)
 Chair: Terry Lynn Hudson (Baylor University)

1:00–1:25 p.m. Ballroom A

- LECTURE/RECITAL: *The Music of Turlough O’Carolan*
 Sean C. McGowan (University of Colorado Denver)
 Chair: Harvey Felder, III (University of Connecticut)

1:00–1:25 p.m. Ballroom D

- LECTURE/RECITAL: *Variations on “Awariguli” by Chen Yi*
 Terry McRoberts (Union University)
 Chair: Susan W. Conkling (Boston University)

1:00–1:55 p.m. Ballroom B

- PANEL: *Teaching Music in Prisons: Building Artistry, Changing Lives*
 Panelists:
 Jamie Hillman (Gordon College)
 Emily Howe (Boston University)
 Andre F. de Quadros (Boston University)
 Chair: Gail Hilson Woldu (Trinity College)

1:00–2:30 p.m. Molly Pitcher

Issues in Technology Education

- Chair: Scott D. Lipscomb (University of Minnesota–Twin Cities)
 1:00 PAPER: *Algorithms as Arbiters of Musical Culture: Exploring Implications for All Music Educators*
 Matthew Thibeault (University of Illinois)

- 1:30 PANEL: *Tech Divas and Girl Geeks: Supporting the Rising Generation of Women in Music and Technology*
 Moderator: Janice P. Smith
 (City University of New York–Queens College)
 Panelists:
 Judith A. Bowman (Duquesne University)
 Gena R. Greher (University of Massachusetts Lowell)
 Sara L. Hagen (Valley City State University)
 Susan M. Piagentini (Northwestern University)
 Kimberly C. Walls (Auburn University–Auburn)

1:00–3:00 p.m. Crispus Attucks

Applications in Performance

- Chair: Barbara Murphy (University of Tennessee–Knoxville)
 1:00 PERFORMANCE: *The Ultimate Sound Palette Revisited*
 Richard Sussman (Manhattan School of Music)
 1:45 PERFORMANCE: *Bleep Blop Electro-Acoustic Ensemble Concert/Demonstration*
 Ramon Castillo (University of Massachusetts Lowell)
 Pei-Yeh Tsai (Boston University)
 2:30 PERFORMANCE: *Seeing the Music: Real-time Performance Feedback via DMX Lighting*
 Joseph S. Plazak (Illinois Wesleyan University)



1:30–1:55 p.m. **Haym Saloman**
PAPER: *The Sing-It-Yourself Messiah: A Particular Kind of Community Engagement*
Kiyoshi Tamagawa (Southwestern University)
Chair: Terry Lynn Hudson (Baylor University)

1:30–1:55 p.m. **Ballroom A**
PAPER: *The Road to Dublin: A Musicologist's Journey to Teaching Irish Music*
Tina Spencer Dreisbach (Hiram College)
Chair: Leah Brown (University of Connecticut)

1:30–1:55 p.m. **Ballroom D**
PAPER: *Native American Music from Southern California: Using Past and Present Sources to Develop a Fuller Understanding*
Steven Elster (San Diego, California)
Chair: Susan W. Conkling (Boston University)

1:30–2:30 p.m. **Thomas Paine B**
Focus Group: Routledge/Taylor & Francis
Author Sumy Takesue, (Routledge), describes how she balances teaching approaches for a varied population of Freshman, Continuing Education and ESL learners, with different musical—and non-musical—backgrounds.

2:00–2:25 p.m. **Haym Saloman**
PAPER: *Songs of the Second New England Composers Group*
Pamela Shannon (Northwest Missouri State University)
Chair: David Ward-Steinman (Indiana University–Bloomington)

2:00–2:25 p.m. **Ballroom A**
PAPER: *Collaborative Learning in the Music Theory Classroom*
Melanie Sehman (Queensborough Community College)
Chair: Marie Nelson (University of Massachusetts–Dartmouth)

2:00–2:55 p.m. **Ballroom B**
PANEL: *Community Music Organizations: Are We Moving in Conjoint or Disjunct Motion?*
Moderator: Debbie A. Rohwer (University of North Texas)
Panelists:
Chelcy L. Bowles (University of Wisconsin–Madison)
William M. Dabback (James Madison University)
Donald DeVito (Sidney Lanier Center)
Donna T. Emmanuel (University of North Texas)
Kari Veblen (University of Western Ontario)
Chair: Elizabeth Lorenzo (Central Connecticut State University)

2:00–2:55 p.m. **Ballroom D**
Building Bridges I: Marginalized Communities
Chair: Jamie D. Spillane (University of Connecticut)
2:00 DEMONSTRATION: *Bridging Multiple Worlds: The Arts as Social Text*
Mary Ellen Junda (University of Connecticut)
Robert W. Stephens (University of Connecticut)

2:30 LECTURE/RECITAL: *The AIDS Quilt Songbook: Art Song as Political Artifact*
John C. Seesholtz (Colorado State University)
Gerald Seminatore (Pepperdine University at Malibu)

2:00–2:55 p.m. **William Dawes**
CMS/ATMI Poster Session
A Case Study on the Smithsonian Folkways World Music Pedagogy Workshop
Amanda C. Soto (University of Idaho)
Challenging the Rote Teaching Plague: The Integration of Aural Skills into the Ensemble Rehearsal
Christopher Langdon (Appalachian State University)

CMS/ATMI Poster Session (continued)

Collaborative Applications: Duality and Role Reversal of Melodic Function in Brahms Lieder and Solo Piano Works

Drew Griffin (Appalachian State University)
Molly Reid (Appalachian State University)

Coordinating a Large Secondary Piano Program

David O. Cartledge (Indiana University–Bloomington)

Curricular Integration: How One School Developed a Core Curriculum to Serve the Needs (and Interests!) of a Specific Music Student Population

Laurie R. Semmes (Appalachian State University)
Jennifer Sterling Snodgrass (Appalachian State University)
Kim L. Wangler (Appalachian State University)

Expanded Opportunities for All: Institutional Distance Learning Component in the Piano Pedagogy Course

Stella B. Sick (Hamline University)
Pamela D. Pike (Louisiana State University)

Fast-Tracking Success: Pathway to the Future

Cecile Forsberg (National Repertory Orchestra)
Michelle Kiec (Kutztown University)

Integrating Music History, Composition, and Improvisation: An Interdisciplinary Approach to Early Music

John Allemeier (University of North Carolina–Charlotte)
James A. Grymes (University of North Carolina–Charlotte)

MIDI Processing and Signal Flow in Logic Pro 9's Object Oriented Environment

Jason M. Gaines (Bronx, New York)

One Teacher's Path Towards Culturally Responsive Music Education in an Urban School: A Case Study

Lisa J. Lehmborg (University of Massachusetts–Amherst)

Reviving Scottish Fiddling: An Ethnographic Study of Scottish Fiddling Competitions in the United States

Deanna Nebel (Kent State University)

Rhythm Syllable Rapprochement: Reconciling Rhythm Syllable Systems

Paula Telesco (University of Massachusetts–Lowell)

Student Advisement and Seminars Online: As good as Face-to-Face?

Harold F. Abeles (Teachers College/Columbia University)
Carol Hohaus-Nizza (Ridgewood, New Jersey)
Barbara Lister-Sink (Salem College)
Anna Song (Linfield College)

This is Your Brain on Beethoven

Diane W. Follet (Muhlenberg College)

Virtual Ensembles for Practice and Performance

Shana Kirk (Yamaha Corporation)
Stella B. Sick (Hamline University)

Vocal Health and Repertoire for the Dramatic Mezzo-Soprano: A Suggested Course of Study

Bonnie Von Hoff (Georgia College)

2:30–2:55 p.m.

Haym Saloman

PAPER: *The Role of Gottlieb Graupner in the Development of Musical Institutions in Early Nineteenth Century Boston*

Debra L. Hess (Florida Gulf Coast University)

Chair: David Ward-Steinman (Indiana University–Bloomington)



2:30–2:55 p.m. Ballroom A

PAPER: *Theory Teachers, Be Aware of What We Teach: What If Chords Do Not Really Matter after All?*
Ivan Jimenez (University of Pittsburgh)
Chair: Marie Nelson (University of Massachusetts–Dartmouth)

2:30–3:30 p.m. Aquarium

Focus Group: Music First

Cloud solutions for your music education students: a peak into the future of music education courses at universities: more technology, more creativity, more interactivity—but what technology will prevail, and why?

2:45–4:30 p.m. Molly Pitcher

Technology Integration for the Music Educator

Chair: Gena R. Greher (University of Massachusetts Lowell)
2:45 PAPER: *Models for Developing Pre- and In-Service Music Teachers' Understanding of Technology Integration*
William I. Bauer (University of Florida)
Richard Dammers (Rowan University)

3:30 PAPER: *Innovative Music Making: Using iPads in the Music Classroom*
Savannah Marshall (University of Massachusetts Lowell)
Meghan K. Scully (Smithtown, New York)

4:00 PAPER: *Games People Play and Games Teachers Love—Considering the Value of Entertainment Video Games in Music Education*
Sigrid Jordal Havre (Sibelius Academy)
Lauri Väkevä (Sibelius Academy)

3:00–3:25 p.m. Haym Saloman

PAPER: *An 80th Anniversary Tribute: Celebrating the Life and works of Ronald Roseman*
Nora A. Lewis (Kansas State University)
Chair: James E. Perone (University of Mount Union)

3:00–3:25 p.m. Ballroom A

PAPER: *Role Reversal: A Collaborative Project in Flipping the Theory Classroom*
Kyle Gullings (University of Texas at Tyler)
Garrett E. Hope (Ursinus College)
Chair: Jing Wang (University of Massachusetts–Dartmouth)

3:00–3:25 p.m. Ballroom B

WORKSHOP: *From Gen Y to the Piano Guys: The Changing Landscape of Students, Music, and Teaching in the 21st Century*
Christy L. Vogt-Corley (McNeese State University)
Chair: Heather MacLaughlin Garbes (Mägi Ensemble)

3:00–3:25 p.m. Ballroom D

PERFORMANCE: *There's Always Room for Dello (Joio): A Centennial Tribute to the Piano Music of Norman Dello Joio (1913–2008)*
Nanette Kaplan Solomon (Slippery Rock University)
Chair: Harold F. Abeles (Teachers College/Columbia University)

3:10–4:10 p.m. Crispus Attucks

Curricular Insights

Chair: Sara L. Hagen (Valley City State University)
3:10 PAPER: *Translating Research in Music Cognition and Neuroscience into Practice Through Music Technology*
Fred J. Rees (Indiana University–Purdue University)
3:40 PAPER: *Going Mobile, Rocking—Recent Development Research Projects of Applied Digital Technology in a Nordic Music Education Program*
Sakari Antila (Sibelius Academy)

3:30–3:55 p.m. **Haym Saloman**

PAPER: *The Leon Kirchner/Roger Sessions Correspondence and Thomas Mann's Doctor Faustus*

Robert D. Riggs (University of Mississippi)

Chair: James E. Perone (University of Mount Union)

3:30–3:55 p.m. **Ballroom A**

PAPER: *Gangnam Style or Substance: Toward a Critical Assessment of Korean Popular Music*

Matthew Schreiber (Saint Joseph's University)

Chair: Jing Wang (University of Massachusetts–Dartmouth)

3:30–3:55 p.m. **Ballroom B**

PAPER: *Construction of Musical Understandings: An Exploration of Peer Tutoring in the School Orchestra Program*

Richard Webb (University of Massachusetts–Amherst)

Chair: Nicole L. Molumby (Boise State University)

3:30–3:55 p.m. **Ballroom D**

LECTURE/RECITAL: *Ecuadorian Folk Music in Luis Humberto Salgado's Chamber Works for Violin and Piano*

Mei-Hsuan Huang (Iowa State University)

Juan Carlos Ortega (Ohio State University–Columbus)

Chair: Eric N. Rice (University of Connecticut)

3:30–4:30 p.m. **Thomas Paine B**

Focus Group: Connect for Education

Maximize engagement and success in your face to face courses with interactive web-texts and online tools for teaching and learning.

We'll cover conducting, survey courses for non-majors and music fundamentals.

3:30–4:30 p.m. **William Garrison**

Focus Group: Tristan Arts

Multimedia Orchestration—a software seminar demonstration for instrumentation and orchestration classes. We will show a cross-section of instruments and discuss how to incorporate the program in classroom and laboratory study.

4:00–4:25 p.m. **Haym Saloman**

PAPER: *Inclusivity, Nationalism, and Pragmatism in Ernest Bloch's Works of the San Francisco Period*

David Z. Kushner (University of Florida)

Chair: Diane Helfers Petrella (University of Missouri–Kansas City)

4:00–4:25 p.m. **Ballroom A**

PAPER: *Multimedia Case Studies in Teaching Musical Creativity*

Valerie Peters (Université Laval)

Chair: Ronald G. Sherwin (University of Massachusetts–Dartmouth)

4:00–4:25 p.m. **Ballroom B**

PAPER: *Mid-career Teaching Goes Back to the Three Rs: Revisiting, Reflecting, and Reinventing*

Ann C. Clements (Penn State University–University Park)

Katherine D. Strand (Indiana University–Bloomington)

Chair: Joshua O. Neumann (University of Florida)

4:00–4:25 p.m. **Ballroom D**

LECTURE/RECITAL: *The Tango in American Piano Music*

Oscar E. Macchioni (University of Texas–El Paso)

Chair: Mary Ellen Junda (University of Connecticut)

4:30–4:55 p.m. **Haym Saloman**

PAPER: *Poulenc's Cycles for Bernac: Understanding the Baryton Martin Through an Analysis of Six Song Cycles*

Matthew Hoch (Auburn University–Auburn)

Chair: Diane Helfers Petrella (University of Missouri–Kansas City)



4:30–4:55 p.m. **Ballroom A**
 PAPER: *The Tanglewood Declaration as the Basis for a Music Curriculum*
 Janet R. Barrett (University of Illinois at Urbana–Champaign)
 Andre F. de Quadros (Boston University)
 Frank Heuser (University of California–Los Angeles)
 Betty Anne Younker (University of Western Ontario)
 Chair: Ronald G. Sherwin (University of Massachusetts–Dartmouth)

4:30–4:55 p.m. **Ballroom B**
 PAPER: *Creativity in the Academy: Musical Projects that Prepare Students to Function as Professional Musicians in the 21st Century*
 Pamela D. Pike (Louisiana State University)
 Chair: Joshua O. Neumann (University of Florida)

4:30–4:55 p.m. **Ballroom D**
 LECTURE/RECITAL: *Brazilian Song: the Nationalism of M. Camargo Guarnieri*
 Deborah G. Nemko (Bridgewater State University)
 Rebecca Sherburn (University of Missouri–Kansas City)
 Sarah Tyrrell (University of Missouri–Kansas City)
 Chair: Mary Ellen Junda (University of Connecticut)

4:30–5:30 p.m. **Crispus Attucks**
ATMI Business Meeting

7:30 p.m. **Location TBA**
ATMI Dinner
 * Dinner not included in registration fee

7:30–9:00 p.m. **Ballroom D**
Performances of New Music II
 Concert Manager: Arthur Gottschalk (Rice University)

Years Later (Selections) Anne Neikirk
Christina English, mezzo-soprano
The Arneis String Quartet:
Heather Braun & Rose Drucker, violins;
Daniel Doña, viola; Agnes Kim, cello

Yours and Mine:
Three Love Songs on Poems of Alice Fulton Douglas P. Ovens
Megan Monaghan, soprano
Douglas P. Ovens, vibraphone

A Road Less Traveled Jess A. Hendricks
Kia-Hui Tan, violin
Douglas P. Ovens, percussion & vibraphone

Flatiron Alexander Elliott Miller
Alexander Elliott Miller, guitar

Toward the Other Shore Suzanne Sorkin
Kia-Hui Tan, violin

Pas de Deux Charles Ditto
Ian Davidson, oboe
Vanguel Tangarov, clarinet

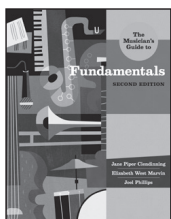
Twelve Landscape Views Jeffrey Roberts
I. Guqin & Cello
Jeffrey Roberts, guqin
Nicole Cariglia, cello

Twelve Signs Chia-Yu Hsu
Kia-Hui Tan, violin

Super Groove Michael D’Ambrosio
Celeste Johnson Fehner, oboe
Christy D’Ambrosio, piano

Friday, November 1

NEW *from* NORTON



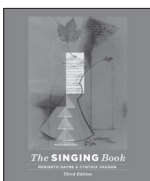
The Musician's Guide to Fundamentals

Second Edition

Jane Piper Clendinning
Elizabeth West Marvin
Joel Phillips

A hands-on approach to mastering the basics in class and online

The Musician's Guide to Fundamentals teaches the basics of music—listening, writing, and performing—with real music, from Bach to the Beatles, Broadway to the Black Eyed Peas. Its unique hands-on approach invites students to listen to music from day one as they learn to interpret musical notation and, eventually, to use it to compose songs of their own. New online resources—including an ebook, online notation from Noteflight, and listening quizzes—offer opportunities to listen, read, and turn in assignments online.



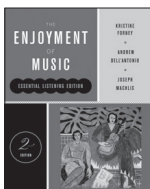
The Singing Book

Third Edition

Meribeth Dayme
Cynthia Vaughn

A joyful introduction to the art of singing, written with the needs of beginners in mind

Students of *The Singing Book* will experience the joy of singing on their very first day. Taking a “Sing First, Talk Later” approach, *The Singing Book* introduces basic vocal techniques and confidence-building exercises, offers exciting and diverse repertoire—including 30 new songs—and gives students the know-how and resources they need to develop the voice and keep it healthy.



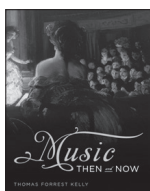
The Enjoyment of Music

Second Essential Listening Edition

Kristine Forney and Andrew Dell'Antonio

Music appreciation your way

With concise, modular chapters and an alternative, thematic table of contents, this innovative and flexible organization supports your creative teaching.



Music Then and Now

Thomas Forrest Kelly

A “you are there” guide to the masterpieces of Western music

Music Then and Now will transport your music appreciation students to the premiere of 28 classic works, bringing these works to life as no other book does.



INDEPENDENT AND EMPLOYEE-OWNED | WWW.NORTON.COM



SATURDAY, NOVEMBER 2

7:30 a.m.–3:00 p.m. **Conference Registration** **Foyer**

8:00 a.m.–3:00 p.m. **President's Pre-Function & 1st Floor Hallways**
Exhibitor Tables Open

8:00–8:55 a.m. **Ballroom D**
Annual Meeting of The College Music Society

Chair: Patricia Shehan Campbell (University of Washington),
CMS President

* All CMS members are encouraged to attend

9:00–9:25 a.m. **Haym Saloman**

PAPER: *Wachet auf! Waking Up Music Appreciation: New Methodologies
and Ideas for Teaching an Old Subject*

Jonathan Allan Irving (Southern Connecticut State University)

Chair: Jennifer Muñiz (Indiana University–South Bend)

9:00–9:25 a.m. **Ballroom A**

PAPER: *Analysis across the Miles: Adventures in Online Collaboration*

Diane W. Follet (Muhlenberg College)

Jennifer Sterling Snodgrass (Appalachian State University)

Chair: Daniel M. Sonenberg (University of Southern Maine)

9:00–9:25 a.m. **Ballroom D**

LECTURE/RECITAL: *One Hand is better Than Two: Piano Works for One
Hand by Women Composers*

Adrienne E. Wiley (Central Michigan University)

Chair: Francesca M. Arnone (Baylor University)

9:00–9:55 a.m. **Ballroom B**

PANEL: *Hawai'i through Music from the Soundtrack of "The
Descendants": A Multi-disciplinary Reading*

Panelists:

Kate McQuiston (University of Hawaii–Manoa)

Hiroya Miura (Bates College)

Ricardo D. Trimillos (University of Hawaii–Manoa)

Respondent: Aaron J. Sala (University of Hawaii–Manoa)

Chair: Jana Millar (Baylor University)

9:00–10:00 a.m. **Molly Pitcher**

Online Music Instruction

Chair: Gena R. Greher (University of Massachusetts Lowell)

9:00 DEMO: *From Face to Face to Online: Music Course Conversion and
Supporting Technologies*

Suzanne Zak (Teachers College/Columbia University)

Harold F. Abeles (Teachers College/Columbia University)

9:30 PAPER: *What is Online? Results of a Survey on Online Music
Courses*

Barbara Murphy (University of Tennessee–Knoxville)

Brendan P. McConville (University of Tennessee–Knoxville)

9:00–10:15 a.m. **Crispus Attucks**

Creative Pedagogies

Chair: Richard Dammers (Rowan University)

9:00 DEMO: *LiveCode: Creating Multimedia Apps for Mobile Devices*

Marc Jacoby (West Chester University)

9:45 PAPER: *MOTU's Digital Performer: A New Look at an Old Friend*

Bruce H. Frazier (Western Carolina University)

Damon W. Sink (Western Carolina University)

9:30–9:55 a.m. **Haym Saloman**

PAPER: *In Burst of Fresh Song: William Churchill Hammond and the Promulgation of the European Christmas Carol through his Mount Holyoke College "Caroling Choir"*

Bonnie S. Jacobi (Colorado State University)
Chair: Jennifer Muñiz (Indiana University–South Bend)

9:30–9:55 a.m. **Ballroom D**

LECTURE/RECITAL: *The Thrush's Legacy: Women as Eco-composers*

Margaret E. Lucia (Shippensburg University)
Chair: Donald Running (Bridgewater State University)

10:00–10:25 a.m. **Ballroom A**

LECTURE/RECITAL: *Improvisation and the Early Nineteenth Century*

Guitar Repertoire
Jerome Mouffe (Bridgewater State University)
Chair: James R. Briscoe (Butler University)

10:00–10:25 a.m. **Ballroom D**

LECTURE/RECITAL: *A Room of Her Own: The MacDowell Colony and the American Woman Composer*

Peggy A. Holloway (University of Nebraska–Omaha)
Nanette Kaplan Solomon (Slippery Rock University)
Chair: Donald Running (Bridgewater State University)

10:00–10:55 a.m. **Haym Saloman**

PANEL: *(Re)Imagining Core Music Curriculum for the Twenty-First Century Musician*

Moderator: Timothy M. Crain (University of Massachusetts–Lowell)

Panelists:

Ramon Castillo (University of Massachusetts–Lowell)

Alex Ruthmann (New York University)

Alan Williams (University of Massachusetts–Lowell)

Chair: Mirna Ogrizovic (Berry College)

10:00–10:55 a.m. **Ballroom B**

PANEL: *Challenging the Norm: Re-Thinking Music Teacher Education*

Moderator: Cara Bernard (Teachers College/Columbia University)

Panelist:

Michael Albertson (Teachers College/Columbia University)

Chair: Scott T. Brickman (University of Maine–Fort Kent)

10:15 a.m.–12:00 p.m. **Molly Pitcher**

Creative Pedagogies

Chair: Janice P. Smith (City University of New York–Queens College)

10:15 DEMO: *Creating Musical Apps for iOS: Basic Tools for the Novice Programmer*

Scott D. Lipscomb (University of Minnesota–Twin Cities)

11:00 PAPER: *Interactive Music Systems within Multimedia Gaming Environments*

V.J. Manzo (Worcester Polytechnic Institute)

Dan Manzo (New Jersey Institute)

11:30 DEMO: *musicGUIDE: An Interactive Music Listening App for iPad*

Chuiyuan Meng (Indiana University–Purdue University)

10:30–10:55 a.m. **Ballroom A**

LECTURE/RECITAL: *Bartók on the Guitar: Performance, Education, and the Power of Folk Song*

Daniel Acsadi (Bridgewater State University)

Adam M. Levin (Boston, Massachusetts)

Chair: James R. Briscoe (Butler University)

10:30–10:55 a.m. **Ballroom D**

LECTURE/RECITAL: *A Renaissance Examined: The Recent Music of Elliott Carter*

Matthew Odell (The Juilliard School/Keene State College)

Chair: Gail Hilson Woldu (Trinity College)



10:30–11:30 a.m. Thomas Paine B
Focus Group: Steingraeber Pianos

New grand pianos with technological advances providing greater artistic expression for the performer: carbon fiber; half-blow (ppp) pedal; sordino pedal; magnetic repetitions; phoenix agrafees-sustain.

10:30 a.m.–12:00 p.m. Crispus Attucks
Applications in Performance

Chair: Reginald Bain (University of South Carolina–Columbia)

10:30 PERFORMANCE: *Location Recording: Inside and Outside the Box with Pro Tools*

William E. Purse (Duquesne University)

11:00 DEMO/PERFORMANCE: *U Mass Lowell's Contemporary Electronic Ensemble—Ideas and Pedagogical Considerations when Starting a Student Electronic Ensemble*

The University of Massachusetts Lowell Contemporary Electronic Ensemble

Mike Testa (University of Massachusetts Lowell)

11:00–11:25 a.m. Ballroom A

LECTURE/RECITAL: *Exploring Mexican Folkloric Idioms in the Guitar Music of Gerardo Tamez*

Karalyn Enz (University of New Hampshire)

George Torres (Lafayette College)

Chair: Ronald G. Sherwin (University of Massachusetts–Dartmouth)

11:00–11:25 a.m. Ballroom D

LECTURE/RECITAL: *The Genre-Bending Whitman Songs of Kurt Weill*

Oliver Henderson (Central Michigan University)

Casey Robards (Central Michigan University)

Chair: Sylvia Parker (University of Vermont)

11:00–11:55 a.m. Haym Saloman

Building Bridges II: Intercultural Creativity

PANEL: *Yorùbá Art Music: History, Practice, and Canonicity*

Moderator: Aaron Carter-Cohn (The Ohio State University)

Panelists:

David Aina (Lagos State University)

Albert Gomez (Our Lady of Perpetual Help Catholic Church–Lagos)

Chair: James R. Briscoe (Butler University)

11:00–11:55 a.m. Ballroom B

PANEL: *Music Theory Pedagogy Panel and Forum: Assignments and Assessments*

Moderator: Claire L. Boge (Miami University)

Panelists:

Mark L. Lochstampfor (Capital University)

Matthew R. Shaftel (Florida State University)

Chair: Robert W. Stephens (University of Connecticut)

11:30–11:55 a.m. Ballroom A

PAPER: *Preparing Students for Emerging Orchestras*

Michael Drapkin (Drapkin Institute for Music Entrepreneurship)

Chair: Ronald G. Sherwin (University of Massachusetts–Dartmouth)

12:15–12:45 p.m. Ballroom D

Lunchtime Concert Series: The Boston Guzheng Ensemble

Chair: Ann L. Silverberg (Austin Peay State University)

* Open to all conference attendees

* Lunch options available for purchase

* See page 14 for group bio

1:00–1:25 p.m. Haym Saloman

PAPER: *The Impact of Teacher Preparation on Teacher Evaluation*

Edward R. McClellan (Loyola University)

Chair: Lisa Scoggin (Watertown, Massachusetts)

1:00–1:25 p.m. **Ballroom A**

PERFORMANCE: *The Stream Flows: Bright Sheng and other Chinese-American Composers*

Kia-Hui Tan (Ohio State University–Columbus)
Chair: Michele E. Kaschub (University of Southern Maine)

1:00–1:55 p.m. **Crispus Attucks**

Special Interest Group: CAI Theory/Aural Skills

1:00–1:55 p.m. **Crispus Attucks**

Special Interest Group: Music Technology Curriculum & Training

1:00–1:55 p.m. **Molly Pitcher**

Special Interest Group: Distance Education

1:00–1:55 p.m. **Aquarium**

Special Interest Group: Music Lab Management

1:00–1:55 p.m. **MLK, Jr.**

Special Interest Group: Multimedia Development

1:00–2:00 p.m. **Ballroom D**

CMS Lightning Talks: *Inclusivity and Invention*

Moderator: Maud Hickey (Northwestern University)

* See the conference website for a description of this format

Is It Really About Teaching Music?

Cathy L. Benedict (Florida International University)

Clickerization in Freshman Theory

Bruce F. Taggart (Michigan State University)

Arts Integration for K–12 Schools: Progressive or Regressive?

David M. Roysse (University of Tennessee–Knoxville)

Music Theory in Chinese: A Beginner's Primer

Claire L. Boge (Miami University)

Wenyin (Phoenix) Deng (Oxford, Ohio)

Passion, Emotion, and Music: Why We Listen

Constance Cook Glen (Indiana University–Bloomington)

The Non-aesthetic Argument for Music in a Liberal Arts Education

Denise Odello (University of Minnesota–Morris)

It's Not Just Mariachi

Amanda C. Soto (University of Idaho)

1:30–1:55 p.m. **Haym Saloman**

PAPER: *School Daze: Learner Centered Teaching in a General Education Popular Music Class*

Mark Bergman (George Mason University)

Chair: Lisa Scoggin (Watertown, Massachusetts)

1:30–1:55 p.m. **Ballroom A**

PAPER: *Wang Xi-Lin, Human Suffering, and Compositional Trends in Twenty-First Century China*

John O. Robison (University of South Florida)

Chair: Joseph S. Plazak (Illinois Wesleyan University)

1:30–2:25 p.m. **Ballroom B**

PANEL: *Let's Take This Outside: Musical Learning and Cultural Knowledge in Diverse Contexts*

Moderator: Bryan Powell (Bergen Community College)

Panelists:

Radio Cremata (Ithaca College)

Joseph M. Pignato (State University of New York–Oneonta)

Gareth Dylan Smith (Institute of Contemporary Music Performance)

Chair: Ting Ho (Montclair State University)



1:30–2:30 p.m. Thomas Paine B
Focus Group: Noteflight

This session will introduce participants to Noteflight's cloud-based notation software. Noteflight's founder Joe Berkovitz will lead a discussion of how Noteflight can best serve the needs of college-level instruction. [www.noteflight.com]

2:00–2:25 p.m. Haym Saloman

PAPER: *Upskirting the Past: Cross-Dressing Divas and Their Impact on LGBTQ Rights*
Trevor Nelson (Appalachian State University)
Chair: George Torres (Lafayette College)

2:00–2:25 p.m. Ballroom A

PAPER: *Civic Engagement and the Applied Music Studio*
Eileen Meyer Russell (Southwestern University)
Chair: Heather De Savage (University of Connecticut)

2:00–2:55 p.m. Crispus Attucks

Applications in Performance

PERFORMANCE: *Performance by Wired.to.the.Edge*
Mike Testa (University of Massachusetts Lowell)
Abraham L. Finch (Salem State University)
Nick Giarratani (Salem State University)
Chair: Scott D. Lipscomb (University of Minnesota–Twin Cities)

2:00–4:00 p.m. Molly Pitcher

Creating Interactive Learning Environments

Chair: Charles P. Menoche (Central Connecticut State University)
2:00 DEMO: *All about Widgets in iBooks Author—Interactive Design Models for Music Technology Courses*
Raymond G. Riley (Alma College)

2:45 PAPER: *Braille Eye for the Sighted Guy: Why Teaching Visually Impaired Students is a Lot Easier Than You Think*
Toby Rush (University of Dayton)

3:30 PAPER: *Max/MSP Software Design for Music, Math and Computer Science Outreach*
Reginald Bain (University of South Carolina–Columbia)

2:30–2:55 p.m. Ballroom A

PAPER: *Development and Delivery of an American Music Course Designed for Chinese Non-major Students*
Hubert Ho (Northeastern University)
Chair: Molly Cryderman-Weber (Lansing Community College)

2:30–2:55 p.m. Ballroom D

PAPER: *Primary Sources in the Twenty First Century: A New Era*
K. Dawn Grapes (Colorado State University)
Chair: Heather MacLaughlin Garbes (Mägi Ensemble)

2:30–3:30 p.m. Aquarium

Focus Group: Rising Software

Join one of the original developers and learn how Auralia and Musition can work with your established curriculum. The session will cover student assessment, musical content, and reporting.

2:30–3:30 p.m. MLK, Jr.

Focus Group: CMS Books & Monographs: Meet the Authors

Meet and greet CMS book authors. Learn more about their rich and diverse research publications. Receive feedback on your own book topics. Explore ideas for future Books & Monographs series.

2:30–3:55 p.m.

Ballroom B

Building Bridges III: Composing Bridges

Chair: Robert W. Stephens (University of Connecticut)

2:30 PAPER: *Breathless: Intentional Breathlessness in Composition, Performance and Pedagogy*

Jennifer Borkowski (Brookline, Massachusetts)

3:00 PANEL: *Composing Together: Building Bridges between Composers and Music Educators*

Moderator: Janice P. Smith (City University of New York–Queens College)

Panelists:

Scott Harris (University of Southern Maine)

Michele E. Kaschub (University of Southern Maine)

Edward Smaldone (City University of New York–Queens College)

2:30–3:55 p.m.

Haym Saloman

Research Presentations by Students & Recent Graduates

Moderators: Gene S. Trantham (Bowling Green State University) and

Jennifer Sterling Snodgrass (Appalachian State University)

Drumming, Disability, and Diplomacy: Deaf Taiko in Japan and the U.S.

Cole Harrison (Columbus, Ohio)

Ironies in Jazz Education: Changes in the Marketplace, Jazz Doctors, the Institutionalization of Art, and the Quest for an Original Voice

Mark Tonelli (West Point, New York)

IV–V–I: The Use of a Games-Based Learning Approach to Understanding Harmonic Function in Music Theory

Alexander Alberti (Appalachian State University)

Pianist’s Embodiment of Musical Knowledge in Self-education: Discovering through the Body and Movement

Midori Kaneko Larsen (New York University)

Treasures of a Toy-box: Invention and Inclusivity in Debussy’s “La Boîte à joujoux”

Mirna Lekic (The Graduate Center, CUNY)

3:00–3:25 p.m.

Ballroom A

PAPER: *Elizabeth Sprague Coolidge (1864–1953) and the Berkshire Chamber Music Festival*

Ting-Lan Chen (University of Nebraska–Kearney)

Chair: Molly Cryderman-Weber (Lansing Community College)

3:00–4:00 p.m.

Crispus Attucks

Integrating Technology

DEMO: *Multimedia Development 101: What Can I do if there isn’t “An App for that”?*

Timothy Nord (Ithaca College)

Chair: Brendan P. McConville (University of Tennessee–Knoxville)

2014 CMS NATIONAL TOPIC:

**“Confluence: Music, Culture,
and Community”**



SATURDAY, NOVEMBER 2

4:00–4:55 p.m.

Ballroom D

Performances of New Music III

Concert Manager: Arthur Gottschalk (Rice University)

A Pattern Music (world premiere) Chris Williams

Strung Out Trio:

Jamie Arrowsmith, viola/violin

Matthew Gould, guitar

Nathanael May, piano

A Blurring Cloud - Geschöpfe der Fahrt Michael Quell

Strung Out Trio

Excerpts from "HackPolitik" Peter Van Zandt Lane

Juventas New Music Ensemble:

Drew Ricciardi, viola

Wolcott Humphrey, clarinet

Julia Scott Carey, piano

anima/animus Nicholas S. Omiccioli

Juventas New Music Ensemble

5:00–6:30 p.m.

Riverside Pavilion

Closing Reception

* *Sponsored in part by Noteflight*

* *Open to all conference attendees*

* *Light hors d'oeuvres provided (does not constitute a full meal)*

* *No-host bar*

~ END OF CONFERENCE ~

Saturday, November 2

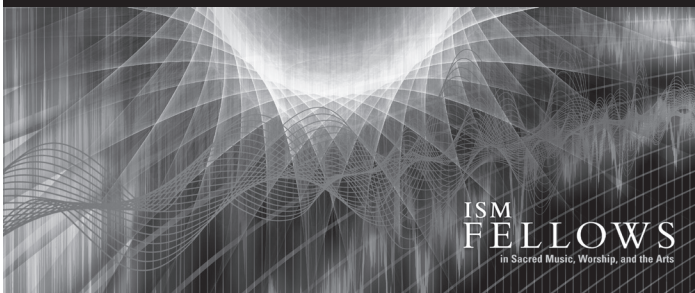
57TH CMS NATIONAL CONFERENCE:

October 30–November 1, 2014

The Ritz-Carlton, St. Louis
St. Louis, Missouri

Deadline for Submissions:
Tuesday, November 26

See www.music.org
for conference details



**YALE INSTITUTE OF SACRED MUSIC
ANNOUNCES**

ISM Fellows in Sacred Music, Worship, and the Arts

**An opportunity for
scholars / religious leaders / artists
to join a vibrant interdisciplinary
community for one year.
Teaching opportunities available.**

**The Yale Institute of Sacred Music
is an interdisciplinary graduate center at Yale University.**

**More information at
www.yale.edu/ism/fellows or ismfellows@yale.edu.**

Yale



CONFERENCE PRE-REGISTRANTS

(complete as of October 2, 2013)

Harold F. Abeles (Teachers College/Columbia University)
Daniel Acsadi (Bridgewater State University)
David Aina (Lagos State University)
Alexander Alberti (Appalachian State University)
Michael Albertson (Teachers College/Columbia University)
John Allemeier (University of North Carolina–Charlotte)
Gerard S. Aloisio (Minnesota State University–Mankato)
Bonnie Anderson (Phillips Academy)
Meredith Anderson (Youngstown State University)
Shane Anderson (Texas A&M University–Corpus Christi)
Sakari Antila (Sibelius Academy)
Robin E. Armstrong (McDaniel College)
Francesca M. Arnone (Baylor University)
Jonatha Asbell (Appalachian State University)
Carol M. Babiracki (Syracuse University)
Reginald Bain (University of South Carolina–Columbia)
Nancy Maria Balach (University of Mississippi)
Janet R. Barrett (University of Illinois at Urbana–Champaign)
Nancy H. Barry (Auburn University–Auburn)
William I. Bauer (University of Florida)
Angela Beeching (Manhattan School of Music)
Cathy L. Benedict (Florida International University)
Gail Berenson (Ohio University)
Stephanie Berg Oram (Red Rocks Community College)
Mark Bergman (George Mason University)
Cara Bernard (Teachers College/Columbia University)
H. Christian Bernhard, II (State University of New York–Fredonia)
Adeline Bethany (Cabrini College)
Deborah Blair (Oakland University)
Alfred W. Blatter (Curtis Institute of Music)
Claire L. Boge (Miami University)
Jennifer Borkowski (Brookline, Massachusetts)
Claudia M. Bossard (Vincennes University)
Barbara E. Bowker (Harper College)
Chelcy L. Bowles (University of Wisconsin–Madison)
Judith A. Bowman (Duquesne University)
Don Bowyer (Arkansas State University–State University)
Scott T. Brickman (University of Maine–Fort Kent)
James R. Briscoe (Butler University)
Leah Brown (University of Connecticut)
Richard R. Bunbury (Boston University)
Katherine Burkhalter (Appalachian State University)
Suzanne L. Burton (University of Delaware)
Patricia Campbell (University of Washington)
Katie Carlisle (Georgia State University)
Gregory D. Carroll (University of North Carolina–Greensboro)
Aaron Michael Carter-Cohn (The Ohio State University)
David O. Cartledge (Indiana University–Bloomington)
Ramon Castillo (University of Massachusetts–Lowell)
Juan Chattah (University of Miami)
Ting-Lan Chen (University of Nebraska–Kearney)
Ann C. Clements (Penn State University–University Park)
Keith E. Clifton (Central Michigan University)
David Colella (Youngstown State University)
Susan W. Conkling (Boston University)
Robert Conway (Wayne State University)
Constance Cook Glen (Indiana University–Bloomington)
John Cotner (Hutto, Texas)
Timothy M. Crain (University of Massachusetts–Lowell)
Radio Cremata (Ithaca College)
Molly Cryderman-Weber (Lansing Community College)
William M. Dabback (James Madison University)
Michael D'Ambrosio (Murray State University)
Richard Dammers (Rowan University)
James M. Day (The College of New Jersey)
Andre F. de Quadros (Boston University)
Heather De Savage (University of Connecticut)
Karen B. Demsey (William Paterson University)
Wenyin (Phoenix) Deng (Oxford, Ohio)
Donald DeVito (Sidney Lanier Center)

CONFERENCE PRE-REGISTRANTS

(complete as of October 2, 2013)

Charles Ditto (Texas State University–San Marcos)
Teryl L. Dobbs (University of Wisconsin–Madison)
Bernard J. Dobroski (Northwestern University)
Gary W. Don (University of Wisconsin–Eau Claire)
Michael Downton (Indiana University)
Alicia M. Doyle (California State University–Long Beach)
Michael Drapkin (Drapkin Institute For Music Entrepreneurship)
Tina Spencer Dreisbach (Hiram College)
Patti Yvonne Edwards (Coastal Carolina University)
Steven Elster (The Center for Investigations of Health & Education Disparities)
Lynn Emberg Purse (Duquesne University)
Donna T. Emmanuel (University of North Texas)
Karalyn Enz (University of New Hampshire)
William A. Everett (University of Missouri–Kansas City)
Terry B. Ewell (Towson University)
Harvey Felder, III (University of Connecticut)
Katie Fernstrom (Youngstown State University)
Susan Filler (Chicago, Illinois)
Abraham L. Finch (Salem State University)
John Fisher (Texas Wesleyan University)
Cisela Flanigan (MusicSpark)
Diane W. Follet (Muhlenberg College)
Cecile Forsberg (National Repertory Orchestra)
Bruce H. Frazier (Western Carolina University)
Peter Freisinger (Freisinger Chamber Orchestra)
Alexander French (Youngstown State University)
Andrew I. Froelich (North Dakota State University)
Victor Fung (University of South Florida)
Jason M. Gaines (Bronx, New York)
Heather MacLaughlin Garbes (Mägi Ensemble)
Leonard Garrison (University of Idaho)
Kevin W. Gerrity (Ball State University)
Nick Giarratani (Salem State University)
Joice Waterhouse Gibson (Metropolitan State University of Denver)
Irene Girton (Occidental College)
Stephen Glover (Landmark College)
Albert Gomez (Our Lady of Perpetual Help Catholic Church)
Cynthia I. Gonzales (Texas State University–San Marcos)
Arthur Gottschalk (Rice University)
Sharon Poulson Graf (Springfield, Illinois)
K. Dawn Grapes (Colorado State University)
John P. Gaulty (Cabrillo College)
Bradley Green (Appalachian State University)
Gena R. Greher (University of Massachusetts Lowell)
Mary-Jo Grenfell (Salem State College)
Drew Griffin (Appalachian State University)
Joyce Griggs (University of Illinois)
Murray Gross (Alma College)
Timothy J. Groulx (University of Evansville)
James A. Grymes (University of North Carolina–Charlotte)
Kyle Gullings (University of Texas at Tyler)
Sara L. Hagen (Valley City State University)
Richard D. Hall (Texas State University–San Marcos)
Keitha Lucas Hamann (University of Minnesota–Twin Cities)
Samuel J. Hamm, Jr. (Rocky Mountain College)
Grace Han (University of Michigan)
Mark Harbold (Elmhurst College)
Matthew Harder (West Liberty University)
Tayloe Harding (University of South Carolina–Columbia)
Scott Harris (University of Southern Maine)
Cole Harrison (Columbus, Ohio)
Sigrid Jordal Havre (Sibelius Academy)
Oliver Henderson (Central Michigan University)
Jess A. Hendricks (Northampton, Massachusetts)
Debra L. Hess (Florida Gulf Coast University)
George Hess (Yong Siew Toh Conservatory of Music)
Frank Heuser (University of California–Los Angeles)
Maud Hickey (Northwestern University)
Lee D. Higgins (Boston University)
Martha F. Hilley (University of Texas–Austin)

CONFERENCE PRE-REGISTRANTS

(complete as of October 2, 2013)

Jamie Hillman (Gordon College)
Jane Hines (Bowling Green, Ohio)
Yoko Hirota (Laurentian University)
Hubert Ho (Northeastern University)
Ting Ho (Montclair State University)
Matthew Hoch (Auburn University–Auburn)
Carol Hohauser-Nizza (Ridgewood, New Jersey)
Peggy A. Holloway (University of Nebraska–Omaha)
Ruth J. Holmes (Lubbock Christian University)
Jason Hoogerhyde (Southwestern University)
Garrett E. Hope (Ursinus College)
Richard Hornsby (University of New Brunswick)
Andrew Houchins (Emporia State University)
Ryan M. Hourigan (Ball State University)
Emily Howe (Boston University)
Chia-Yu Hsu (Eau Claire, Wisconsin)
Mei-Hsuan Huang (Iowa State University)
Terry Lynn Hudson (Baylor University)
Jennifer Hund (Purdue University)
Eric Hing-Tao Hung (Westminster Choir College)
Amanda Huntleigh (University of Washington)
Jonathan Allan Irving (Southern Connecticut State University)
Bonnie S. Jacobi (Colorado State University)
Marc Jacoby (West Chester University)
Ivan Jimenez (University of Pittsburgh)
Vicky V. Johnson (Tarleton State University)
Eric Jones (Champaign, Illinois)
Patrick Jones (Appalachian State University)
Robert J. Jones (North Dakota State University)
Mary Ellen Junda (University of Connecticut)
Kari H. Juusela (Berklee College of Music)
Laurence D. Kaptain (Louisiana State University)
Michele E. Kaschub (University of Southern Maine)
Philip S. Kates (Palmetto Bay, Florida)
Paul Kenyon (Point Loma Nazarene University)
Michelle Kiec (Kutztown University)
Hyemin Heather Kim (Tallahassee, Florida)
Shana Kirk (Yamaha Corporation of America)
Gerald Klickstein (Peabody Conservatory of Music)
John Koegel (California State University–Fullerton)
Michael J. Krajewski (Minnesota State University–Moorhead)
Steven Kreinberg (Temple University)
Carys Elisabeth Kunze (Appalachian State University)
David Z. Kushner (University of Florida, Emeritus)
Christopher Langdon (Appalachian State University)
Midori Kaneko Larsen (New York University)
Peter J. Learn (University of Miami)
Sang-Hie Lee (University of South Florida)
Lisa J. Lehmberg (University of Massachusetts–Amherst)
Mirna Letic (The Graduate Center, CUNY)
Dina Lentsner (Capital University)
John Leupold (Washington College)
Adam M. Levin (Boston, Massachusetts)
Nora A. Lewis (Kansas State University)
Amber Yiu-Hsuan Liao (New York, New York)
John E. Lindberg (Minnesota State University–Mankato)
Tavis Linsin (University of Washington)
Scott D. Lipscomb (University of Minnesota–Twin Cities)
Barbara Lister-Sink (Salem College)
George F. Litterst (Cyber Conservatory)
Rebecca Little (Youngstown, Ohio)
Mark L. Lochstampfer (Capital University)
Margaret E. Lucia (Shippensburg University)
Oscar E. Macchioni (University of Texas–El Paso)
Christopher Mangum (Nassau BOCES)
Daniel Manoiu (Miami, Florida)
Roger Mantie (Boston University)
Dan Manzo (New Jersey Institute)
V.J. Manzo (Worcester Polytechnic Institute)
Rebecca G. Marchand (Boston Conservatory)

CONFERENCE PRE-REGISTRANTS

(complete as of October 2, 2013)

Laura Marshall (Fort Collins, Colorado)
Savannah Marshall (University of Massachusetts Lowell)
Melissa Martiros (Martin Methodist College)
David S. Mash (Berklee College of Music)
Kathleen Maskell (Regis College)
V. Keith Mason (Belmont University)
Nathanael A. May (Missouri Western State University)
Anne B. Mayer (Carleton College)
Edward R. McClellan (Loyola University)
Kathleen McCloskey (Chestnut Hill College)
Brendan P. McConville (University of Tennessee–Knoxville)
Sean C. McGowan (University of Colorado Denver)
Kate McQuiston (University of Hawaii–Manoa)
Terry McRoberts (Union University)
Chuiyuan Meng (Indiana University–Purdue University)
Charles P. Menoche (Central Connecticut State University)
Jana Millar (Baylor University)
Michael W. Millar (California State Polytechnic University–Pomona)
Alexander Elliott Miller (Illinois State University)
Dan Miller (Vincennes University)
Lisa Miller (Vincennes University)
Hiroya Miura (Bates College)
Nicole L. Molumby (Boise State University)
S. Gibson Monokoski (Waubonsee College)
David R. Montano (University of Denver)
Jason Moody (Seattle, Washington)
Sarah Morelli (University of Denver)
Jerome Mouffe (Bridgewater State University)
Jordan Mroziak (Duquesne University)
Jennifer Muñoz (Indiana University–South Bend)
Barbara Murphy (University of Tennessee–Knoxville)
Paul T. Murphy (State University of New York–Fredonia)
David E. Myers (University of Minnesota–Twin Cities)
Deanna Nebel (Kent State University)
Anne Neikirk (Philadelphia, Pennsylvania)
David L. Nelson (University of North Carolina–Greensboro)
Marie Nelson (University of Massachusetts–Dartmouth)
Trevor Nelson (Michigan State University)
Deborah G. Nemko (Bridgewater State University)
Joshua O. Neumann (University of Florida)
Quynh Nguyen (City University of New York–Hunter College)
Richard Niezen (University of Colorado–Colorado Springs)
Timothy Nord (Ithaca College)
Jeffrey C. Nyttch (University of Colorado–Boulder)
Matthew Odell (The Juilliard School)
Denise Odello (University of Minnesota–Morris)
Mirna Ogrizovic (Berry College)
Ayo Oluranti (Youngstown, Ohio)
Nicholas S. Omiccioli (Kansas City, Missouri)
Juan Carlos Ortega (Ohio State University–Columbus)
Douglas P. Ovens (Muhlenberg College)
Douglas Owens (Old Dominion University)
Judith A. Palac (Michigan State University)
Jane E. Palmquist (City University of New York–Brooklyn)
Stephen A. Paparo (University of Massachusetts Amherst)
Craig B. Parker (Kansas State University)
Sylvia Parker (University of Vermont)
Marcia Bornhurst Parkes (Rochester, New York)
Lee Pearson (Flutibia)
Mario J. Pelusi (Illinois Wesleyan University)
Mason Peralta (The Juilliard School)
James E. Perone (University of Mount Union)
Valerie Peters (Université Laval)
Gene D. Peterson (University of Tennessee–Knoxville)
Diane Helfers Petrella (University of Missouri–Kansas City)
Scott L. Phillips (University of Alabama–Birmingham)
Roderick Phipps-Kettlewell (Amadé Music, Inc)
Susan M. Piagentini (Northwestern University)
Joseph M. Pignato (State University of New York–Oneonta)
Pamela D. Pike (Louisiana State University)

CONFERENCE PRE-REGISTRANTS

(complete as of October 2, 2013)

Joseph S. Plazak (Illinois Wesleyan University)
Bryan Powell (Bergen Community College)
Hannah E. Price (Appalachian State University)
Brian D. Pryor (Bellevue College)
William E. Purse (Duquesne University)
Catherine Fitterman Radbill (New York University, Emeritus)
Fred J. Rees (Indiana University–Purdue University)
Mary Ann Rees (Gresham, Oregon)
Jill A. Reese (State University of New York at Fredonia)
Molly Reid (Appalachian State University)
Mitchel Resnick (MIT Lifelong Kindergarten Group)
Eric N. Rice (University of Connecticut)
Robert D. Riggs (University of Mississippi)
Raymond G. Riley (Alma College)
Holly K. Roadfeldt-O’Riordan (Lafayette College)
Casey Robards (Central Michigan University)
Jeffrey Roberts (East Hampstead, New Hampshire)
John O. Robison (University of South Florida)
Stacy D. Rodgers (University of Mississippi)
Laura Leigh Roelofs (Wayne State University)
Debbie A. Rohwer (University of North Texas)
Jena Root (Youngstown State University)
Eric Rosenbaum (MIT Lifelong Kindergarten Group)
Jennifer Rosenfeld (iCadenza)
Colin Roust (Chicago College of Performing Arts)
David M. Royle (University of Tennessee–Knoxville)
Donald Running (Bridgewater State University)
Toby Rush (University of Dayton)
Eileen Meyer Russell (Southwestern University)
Alex Ruthmann (New York University)
Chris Rutkowski (Indiana University–Purdue University)
Aaron J. Sala (University of Hawaii–Manoa)
Ed Sarath (University of Michigan–Ann Arbor)
Natalie Sarrazin (The College at Brockport)
Thomas Scahill (New England Conservatory)
John W. Scheib (Ball State University)
Richard Schmunk (University of Southern California)
Charlie Schneeweis (Marlboro, Vermont)
Matthew Schreibeis (Saint Joseph’s University)
Garrett Schumann (Ann Arbor, Michigan)
Deborah Schwartz-Kates (University of Miami)
Franco Sciannameo (Carnegie Mellon University)
Lisa Scoggin (Watertown, Massachusetts)
James C. Scott (University of North Texas)
Shannon Scott (Washington State University)
Meghan K. Scully (Smithtown, New York)
Douglass Seaton (Florida State University)
John C. Seesholtz (Colorado State University)
Melanie Sehman (Queensborough Community College)
Gerald Seminatore (Pepperdine University at Malibu)
Laurie R. Semmes (Appalachian State University)
Matthew R. Shaftel (Florida State University)
Ellen Cooper Shanahan (Berkshire Community College)
Pamela Shannon (Northwest Missouri State University)
Brian K. Shepard (Texas Christian University)
Rebecca Sherburn (University of Missouri–Kansas City)
Ronald G. Sherwin (University of Massachusetts–Dartmouth)
Matthew Shevitz (Harold Washington College)
Yeji Shim (Woburn, Massachusetts)
Reeves Shulstad (Appalachian State University)
Stella B. Sick (Hamline University)
Ann L. Silverberg (Austin Peay State University)
Marissa D. Silverman (Montclair State University)
Damon W. Sink (Western Carolina University)
Edward Smaldone (City University of New York–Queens College)
Gary Smart (University of North Florida)
Gareth Dylan Smith (Institute of Contemporary Music Performance)
Janice P. Smith (City University of New York–Queens College)
Jennifer Sterling Snodgrass (Appalachian State University)
Nanette Kaplan Solomon (Slippery Rock University)

CONFERENCE PRE-REGISTRANTS

(complete as of October 2, 2013)

Daniel M. Sonenberg (University of Southern Maine)
Anna Song (Linfield College)
Suzanne Sorkin (Saint Joseph's University)
Amanda C. Soto (University of Idaho)
Jamie D. Spillane (University of Connecticut)
Jason B. Sprankle (Central Carolina Technical College)
Staci Spring (Stephen F. Austin State University)
Andrew Stamp (Youngstown State University)
Robert W. Stephens (University of Connecticut)
Jessica Sternfeld (Chapman University)
Katherine D. Strand (Indiana University–Bloomington)
Frank L. Strnad (Claremont Graduate University)
Todd E. Sullivan (Northern Arizona University)
Richard Sussman (Manhattan School of Music)
Christopher Swanson (Longwood University)
Matt Swanson (University of Washington)
Mark Swift (Washington and Jefferson College)
Bruce F. Taggart (Michigan State University)
Cynthia Crump Taggart (Michigan State University)
Manabu K. Takasawa (University of Rhode Island)
Sumy A. Takesue (Santa Monica College)
Kiyoshi Tamagawa (Southwestern University)
Kia-Hui Tan (Ohio State University–Columbus)
Paula Telesco (University of Massachusetts–Lowell)
Mike Testa (University of Massachusetts Lowell)
Matthew Thibeault (University of Illinois)
Linda K. Thompson (Lee University)
Virginia M. Thompson (West Virginia University)
David P. Thurmaier (University of Missouri–Kansas City)
Mark Tonelli (West Point, New York)
Julia Torgovitskaya (Los Angeles, California)
George Torres (Lafayette College)
Joan Tower (Bard College)
Gene S. Trantham (Bowling Green State University)
Ricardo D. Trimillos (University of Hawaii–Manoa)
Pei-Yeh Tsai (Boston University)
Sarah Tyrrell (University of Missouri–Kansas City)
Lauri Väkevä (Sibelius Academy)
Kari Veblen (University of Western Ontario)
Christy L. Vogt-Corley (McNeese State University)
Bonnie Von Hoff (Georgia College)
Kinh T. Vu (Medford, Massachusetts)
Barbara Wallace (Dallas Baptist University)
Kimberly C. Walls (Auburn University–Auburn)
Jing Wang (University of Massachusetts–Dartmouth)
Kim L. Wangler (Appalachian State University)
David Ward-Steinman (Indiana University–Bloomington)
Keegan T. Watson (Fleetwood, North Carolina)
Richard Webb (University of Massachusetts–Amherst)
Peter R. Webster (University of Southern California)
Frank M. Weinstock (Cyber Conservatory)
Lindsay Weiss (Teachers College/Columbia University)
Kristin Wendland (Emory University)
Bruce Whisler (University of Central Florida, Emeritus)
Ethan F. Wickman (University of Texas–San Antonio)
Adrienne E. Wiley (Central Michigan University)
Alan Williams (University of Massachusetts–Lowell)
David Brian Williams (Illinois State University, emeritus)
Jennifer CHJ Wilson (The Graduate Center, CUNY)
Gail Hilson Woldu (Trinity College)
Larry Worster (Metropolitan State University of Denver)
Betty Anne Younker (University of Western Ontario)
Moona Yu (Georgia Military College)
Cicilia Yudha (Youngstown State University)
Suzanne Zak (Teachers College/Columbia University)
Karen Zorn (Longy School of Music)

"One of this country's leading conservatories"
— The New York Times

musicology and music theory at CCM

Distinguished Faculty

David Carson Berry: Schenkerian topics, American popular music, post-tonal analysis, Stravinsky, history of theory (1750-1950)

Steven J. Cahn: Schoenberg, aesthetics, theories of history, imaging of musical phenomena, behavioral-neural correlations of musicality

Stefan Fiol: Himalayan studies, musical regionalism, ritual and media studies, ethnomusicological theory

Jeongwon Joe: 20th-century music, opera-cinema studies, film music, cultural studies

Jonathan Kregor: 19th-century aesthetics, Liszt, music & memory, virtuosity & gender, art songs, musical reproductions

Catherine Losada: post-tonal music, transformational theory, musical collage, music after 1950

bruce d. mcclung: American music, musical theater, mass entertainment, manuscript studies, critical editing

Mary Sue Morrow: 18th-century topics (including the symphony), sociology of music, nationalism, music criticism & aesthetics

Samuel Ng: Brahms, metrical dissonance, phrase rhythm, music perception, analysis & performance

Matthew Peattie: Medieval music, Beneventan chant, modality, sources & transcription, musical change

Miguel Roig-Francoli: history of theory (Renaissance), analysis of early music, 20th-century topics, music theory pedagogy

Stephanie P. Schlagel: Renaissance studies, Josquin des Prez, the motet, reception history, editing early music

Christopher Segall: Russian music and theory, 20th-century music, neo-Riemannian theory, popular music

Teaching Assistantships and Doctoral Fellowships available

For details about graduate programs:
ccm.uc.edu/comp_theory_hist

For admissions & financial aid info:
ccm.uc.edu/admissions



COLLEGE-CONSERVATORY OF MUSIC

PARIS, THE CONSERVATOIRE, AND 21ST CENTURY TEACHING: A STUDY TOUR

JUNE 1–5, 2014 • JAMES R. BRISCOE, DIRECTOR

A CMS PROFESSIONAL DEVELOPMENT INITIATIVE

During this exciting opportunity, study tour participants will:

- Observe classes at the Conservatoire National Supérieur de Musique et de Danse de Paris
- Attend private lessons and masterclasses at the Conservatoire
- Observe semester juries and Concours of the Conservatoire
- Engage in discussions with administrators of the Conservatoire regarding the topic of professionalization
- Discuss professionalization with faculty of the Sorbonne (Université de Paris IV)
- Tour the Museum of Musical Instruments
- Attend an opera at the Opéra Bastille
- Enjoy meals and networking opportunities with colleagues

PARTICIPATION IS LIMITED TO 25 PERSONS

DEADLINE FOR REGISTRATION: MONDAY, MARCH 3, 2014

TO LEARN MORE VISIT THE CMS WEBSITE AT WWW.MUSIC.ORG!



Riveting and soul-stirring, the internationally acclaimed LIBANA takes audiences on a musical journey illuminating the creativity, vision, and spirit of women worldwide—reflecting the universal human experience uniting us all. From Bulgaria to India to Morocco and across North America—Libana's expansive artistry inspires audiences and invokes a sense of wonder at the beauty, breadth and wisdom of our world's cultural diversity and common humanity.



Come visit us at Booth #40!

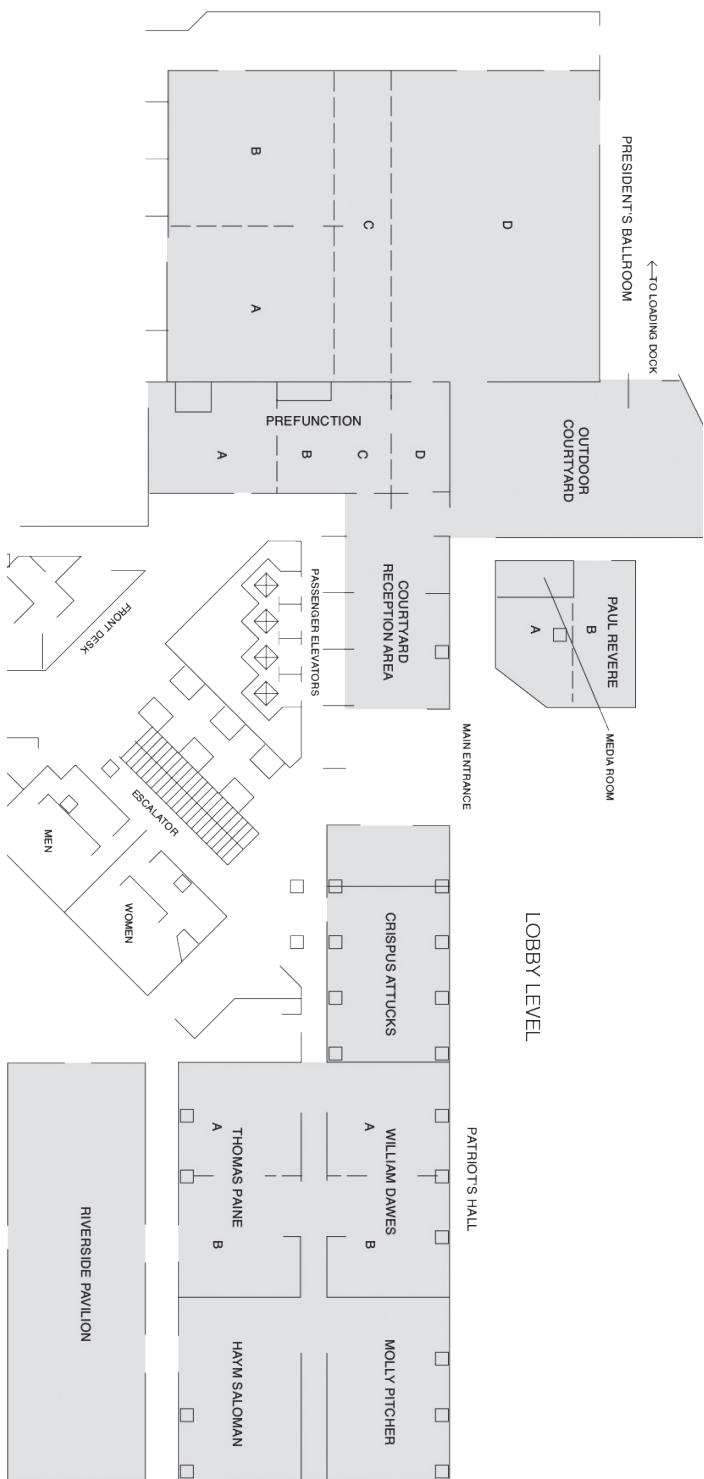
Inspiring music educators and vocal ensembles worldwide, Libana's recordings and songbooks will be available for purchase.

Now booking Libana's 35th anniversary 2013-2014 touring season; offering concerts and workshops nationally and internationally.

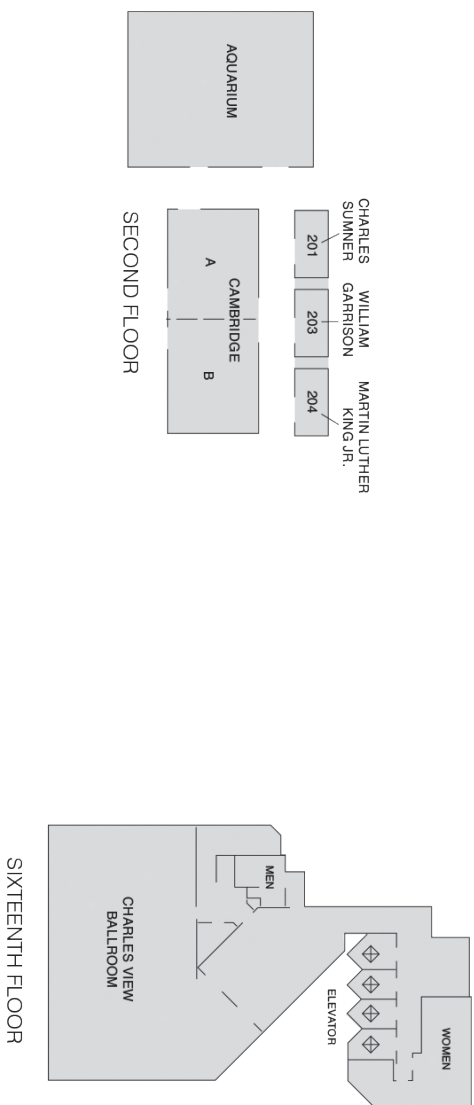
libanainc@gmail.com (617) 628-0916 (800) 997-7757

libana.com [facebook.com/libanamusic](https://www.facebook.com/libanamusic)

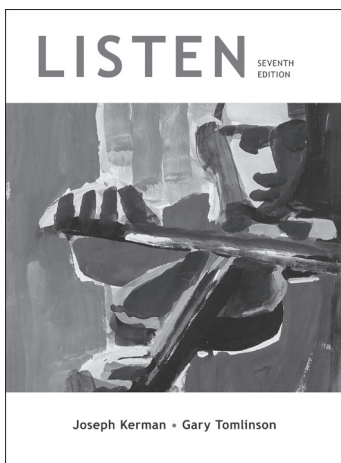
Libana, Inc., PO Box 400530, Cambridge, MA 02140



HYATT REGENCY CAMBRIDGE FLOOR PLAN



The best introduction to focused listening



Listen

(with DVD)


Seventh Edition

Joseph Kerman

University of California, Berkeley

Gary Tomlinson

University of Pennsylvania

 Also available
as an e-book

Joseph Kerman • Gary Tomlinson

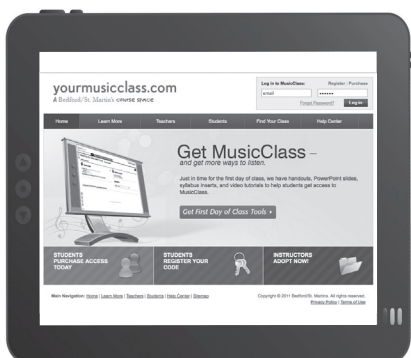
bedfordstmartins.com/listen/catalog

Flexible formats and affordable choices

- The e-book with streaming music integrates all of the music and Interactive Listening Charts for the music appreciation course at roughly half the price of the print copy with CDs.
- Streaming music can be packaged with the print book or the loose-leaf edition to give students even more affordable options.



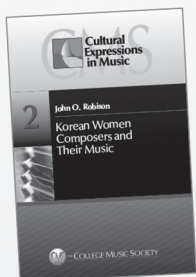
- *MusicClass*, a unique online course space, lets you combine your own content with preloaded digital content for *Listen*, including the e-book with streaming music, Interactive Listening Charts, tutorials on music fundamentals, quizzes, and more.





PUBLICATIONS

The College Music Society offers the following series:



- ***Cultural Expressions in Music*** – providing perspective on and insight into the breadth of cultural inclusion in a wide variety of musical works.

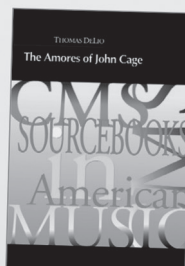
- ***Monographs and Bibliographies in American Music*** –

bibliographic sourceworks designed to facilitate the study and understanding of American music and of music in the Americas. This series includes comprehensive and rigorous studies of significant works and composers.



- ***Sourcebooks in American Music*** –

dedicated to landmark compositions and creative performances in American music. These studies demonstrate the remarkable scope of musical expression in the United States.



Information concerning these series, including updated lists of current volumes, is available by visiting "Books and Monographs" on the CMS website.

www.music.org

312 East Pine Street, Missoula MT 59802 USA

PHONE: (406) 721-9616 FAX: (406) 721-9419

EMAIL: cms@music.org

